



MEETINGS AND EVENTS

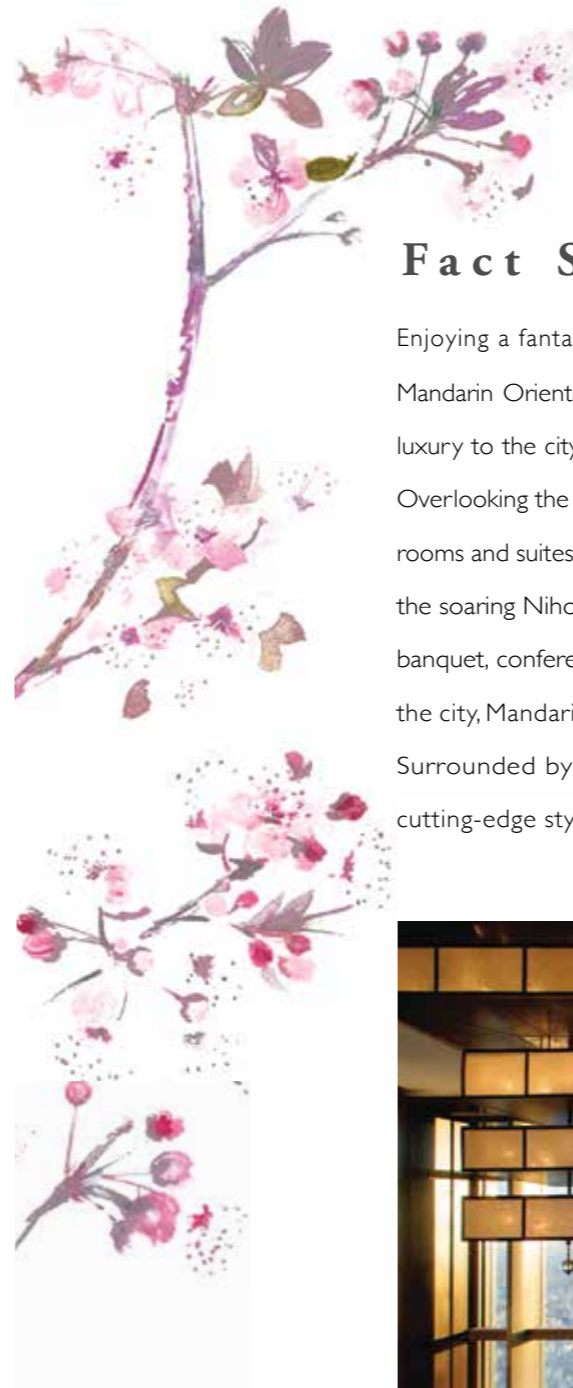


Spread between a modern tower and a historic landmark, Mandarin Oriental, Tokyo offers guests the unique opportunity to hold their meeting, event or celebration in either a cultural heritage or contemporary setting. The Grand Ballroom and wedding chapel are located on the third floor of Nihonbashi Mitsui Tower, while ten banquet and meeting rooms are set within the adjacent Mitsui Main Building.

Mandarin Oriental, Tokyo
2-1-1, Nihonbashi Muromachi, Chuo-ku,
Tokyo 103-8328, Japan
Telephone +81 (0)3 3270 8800
Facsimile +81 (0)3 3270 8828
motyo-sales@mohg.com



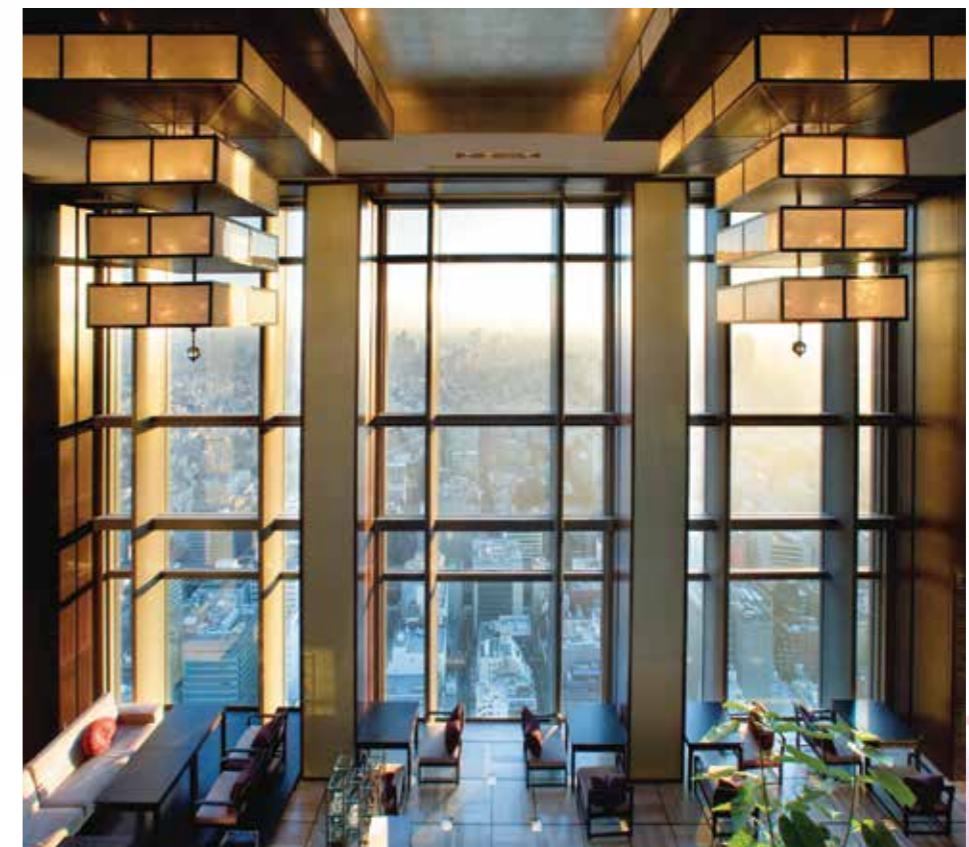
mandarinoriental.com



Fact Sheet

Enjoying a fantastic location in the heart of Nihonbashi, Mandarin Oriental, Tokyo brings a sense of contemporary luxury to the city's prestigious financial district.

Overlooking the Imperial Palace Garden and TOKYO SKYTREE, the hotel's award-winning rooms and suites, renowned restaurants and stunning spa are situated on the top floors of the soaring Nihonbashi Mitsui Tower. In the adjacent Mitsui Main Building lie the hotel's banquet, conference facilities and wedding salon. Conveniently located in the heart of the city, Mandarin Oriental, Tokyo enjoys a bird's eye view of the breathtaking skyline. Surrounded by the chic shops and offices of Nihonbashi, our hotel offers crisp, cutting-edge style, state-of-the-art technology and impeccable service.



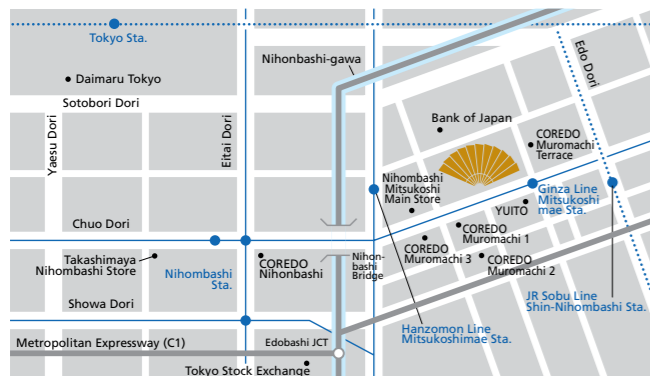
FACT SHEET



LOCATION

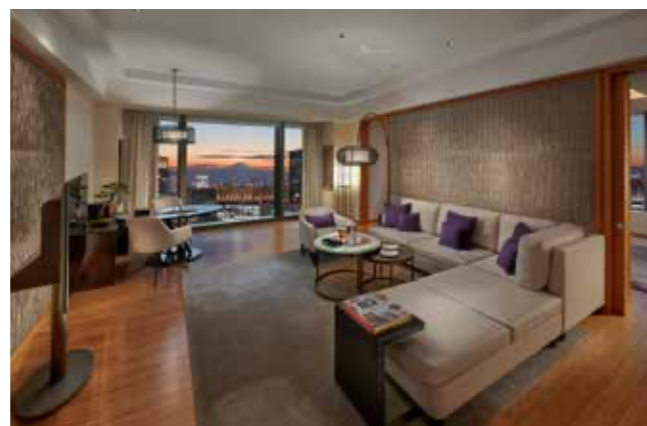
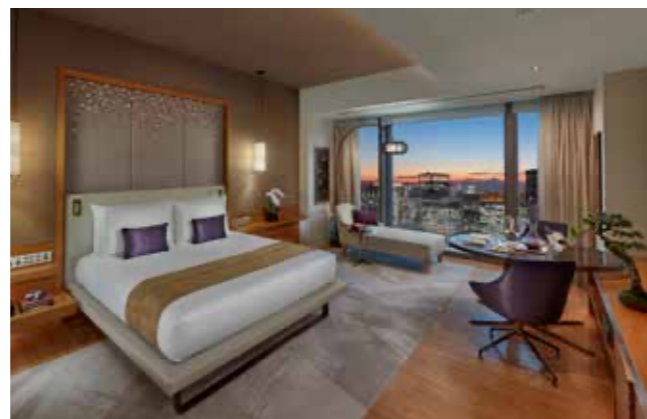
With our covetable Nihonbashi address, we are within easy reach of some of Tokyo's most prominent business addresses and attractions.

- Close to the celebrated 'Bridge of Japan' from which Nihonbashi takes its name
- Direct access to Mitsukoshimae subway station and JR Shin-Nihombashi station
- Direct access to COREDO Shopping Complex and Cinema
- Within walking distance of many of Tokyo's main attractions including the Imperial Palace and the exclusive Ginza shopping area
- Eight minutes from Tokyo Station
- 12 minutes from Tokyo Stock Exchange
- Within 90-minute drive of Narita International Airport
- Within 40-minute drive of Haneda International Airport
- Within 10-minute drive of Tokyo City Air Terminal



GUEST ROOMS AND SUITES

Located between the 30th and 36th floors of the futuristic, 38-storey Nihonbashi Mitsui Tower, our 179 luxuriously appointed guest rooms and suites offer spectacular views of the Tokyo skyline. Ranging from 50 to 60 square metres, our guest rooms are spaciouly sized, while our opulent suites range from 90 to 250 square metres.



RESTAURANTS AND BARS

With an enticing mix of mouth-watering cuisine, breathtaking views and stunning interior design, we offer an extensive choice of restaurants and bars.

- Signature French Fine Dining
- Sense Cantonese Dining
- Tapas Molecular Bar
- Sushi Shin by Miyakawa
- K'shiki Italian Dining
- The Pizza Bar on 38th
- Ventaglio
- Mandarin Bar
- The Cellar Private Dining
- Oriental Lounge
- Sense Tea Corner
- The Mandarin Oriental Gourmet Shop



THE SPA

The Spa at Mandarin Oriental, Tokyo merges therapies and philosophies from around the world to create an exotic array of treatments. In nine serene rooms, including four suites and a Spa Studio, guests will be guided through a bespoke journey of Asian and Western-inspired healing, designed to relax, inspire and create an exceptional awareness of true well-being.

