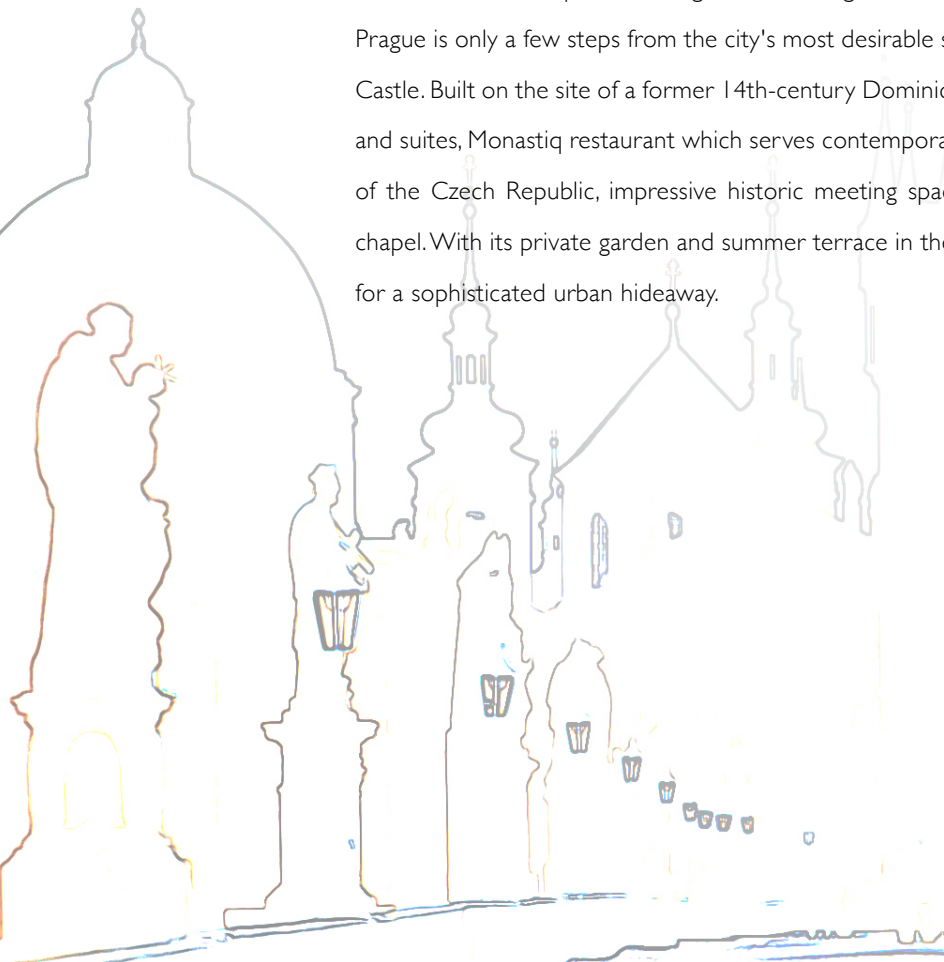




FACT SHEET



Located amidst the palaces and gardens of Prague's historic Malá Strana (Lesser Town), Mandarin Oriental, Prague is only a few steps from the city's most desirable sights such as the iconic Charles Bridge and Prague Castle. Built on the site of a former 14th-century Dominican monastery, the hotel features 99 elegant rooms and suites, Monastiq restaurant which serves contemporary local dishes inspired by the rich culinary history of the Czech Republic, impressive historic meeting space and a unique holistic spa housed in a historic chapel. With its private garden and summer terrace in the courtyard sheltered by high walls, it is a synonym for a sophisticated urban hideaway.



FACT SHEET



LOCATION

Its stunning location at the very heart of the historic city centre and easy access to all major sights makes it a perfect base to explore the ancient city.

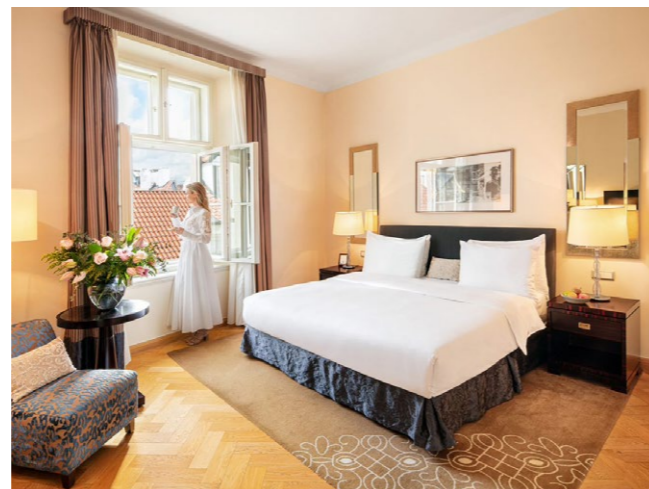
- 5-minute walk to Charles Bridge
- 15-minute walk to Prague Castle
- 15-minute walk to the Old Town Square
- 20-minute walk to Wenceslas Square
- 25-minute drive to the Prague Airport
- 3-minute walk to tram station Hellichova
- 12-minute walk to metro station Malostranská



ROOMS AND SUITES

Offering an enticing blend of historic character and contemporary design, our rooms and suites exude a sense of elegant style.

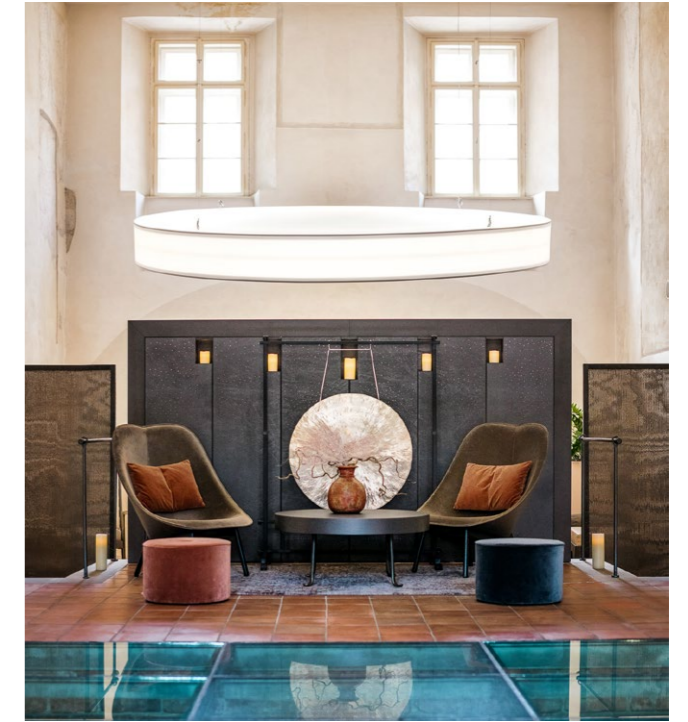
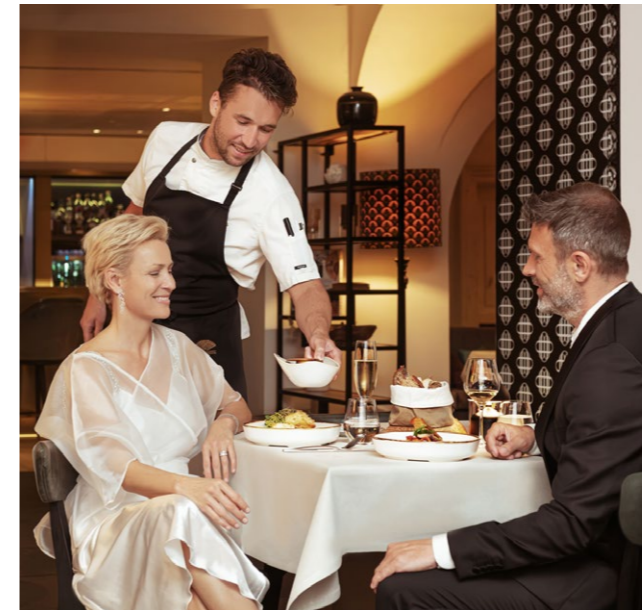
- 99 spacious guest rooms and suites with luxurious limestone bathrooms and premium amenities
- Rooms and suites feature historical elements such as vaulted ceilings and polished parquet floors
- The Presidential Suite offers a large outdoor terrace with stunning views of the iconic Prague Castle panorama
- 4 Signature suites each offer a unique layout, style and decorations
- Deluxe Terrace rooms offer garden access and private patio



RESTAURANTS AND BARS

Embark on a culinary journey through Czech history, a dining experience that pays homage to Czech culinary heritage with a touch of modern elegance.

- Monastiq Restaurant – Experience a tribute to Czech culinary traditions, where each dish not only presents the rich flavours of Bohemia but also reveals the stories behind each skillfully created dish. To accompany your dining experience, Czech wines and classic vintages from around the world are carefully selected to perfectly complement the menu.
- Monastiq Bar & Lounge – Sip on elegant cocktails crafted from Czech heritage spirits like Becherovka, including unique mixes inspired by Prague's rich culinary tradition. Savour original small bites and sharing dishes from the bar menu.



SPA AND WELLNESS

Our Spa is housed in a former Renaissance chapel, offering a unique space in which to begin your journey to equilibrium.

- Glass floors reveal Gothic church ruins
- Treatment suites including 2 couples' suites, each with unique design
- Signature treatments tailored to individual needs
- Exclusive partnerships with sophisticated skin care brands like OTO, I I SKIN and Aromatherapy Associates.
- Vitality pool with hydrotherapy jets
- Steam shower with aroma-infused steam
- Tea Lounge for relaxation with exotic herbal teas
- Fitness centre with sauna



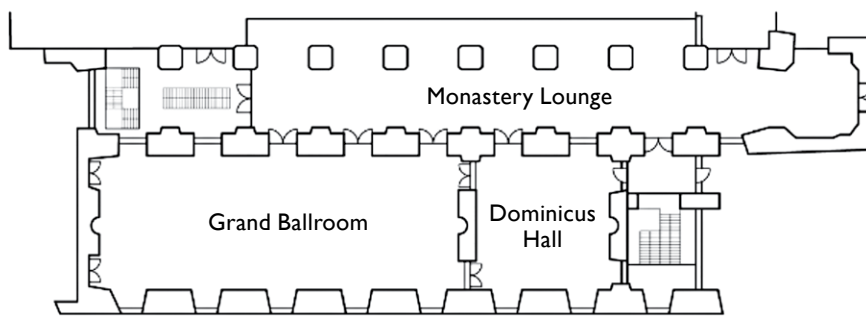
MEETINGS AND EVENTS

Situated in a former monastery, we provide a stunning setting combined with years of experience for your meeting or event.

- Grand Ballroom with a 6.5-metre-high vaulted ceiling is the centrepiece of the event facilities
- Perfect location of choice for social events, destination weddings and celebrations.



Room	Theatre	Classroom	Boardroom	U-Shape	Rounds	Cabaret	Reception	Size (sqm)
Grand Ballroom	160	100	50	50	120	80	150	157.3
Dominicus Hall	45	32	18	20	40	32	50	57.76
Monastery Lounge	n/a	n/a	n/a	n/a	60	n/a	150	118
Boardroom 2	n/a	n/a	12	n/a	n/a	n/a	n/a	24.5



Mandarin Oriental, Prague
 Nebovidská 459/1 | 118 00 Prague |
 Malá Strana Czech Republic
 +420 233 088 888



mandarinoriental.com/prague