



MANDARIN ORIENTAL  
MILAN

# EVENTS AND MORE

*at Mandarin Oriental, Milan*





# MILAN

*offering*

---

## DESTINATION

---

**Milan**

Mandarin Oriental, Milan

---

## CORPORATE MEETINGS

---

## SPECIAL EVENTS

---

## WEDDING

---

## CATERING

---

## HOTEL

---

## CONTACTS

---

## SUBMIT ENQUIRY

---

*Renowned for its world-class shopping, fashion and design trends, Milan is a vibrant cosmopolitan metropolis with a booming arts scene.*

*Its historical landmarks include the magnificent Duomo and the world-famous La Scala Opera House, both only minutes away from Mandarin Oriental, Milan.*

*World-class museums including Fondazione Prada, an arts complex that is the city's hippest art venue, showcase the best of contemporary art, while galleries and churches such as the Renaissance Santa Maria delle Grazie house artistic masterpieces, most notably Da Vinci's *The Last Supper*.*

*Milan serves as a convenient jumping-off point to explore the beauty of northern Italy. The area's stunning lakes, quiet country towns and seaside retreats are a short drive away, while the nearby Alps offer excellent hiking and skiing opportunities.*



# A PERFECT EVENT AT MANDARIN ORIENTAL, MILAN

---

## DESTINATION

---

Milan

Mandarin Oriental, Milan

---

CORPORATE MEETINGS

---

SPECIAL EVENTS

---

WEDDING

---

CATERING

---

HOTEL

---

CONTACTS

---

SUBMIT ENQUIRY

---



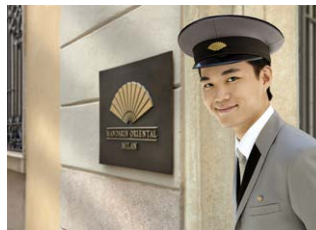
*Located in the heart of Milan at the crossroads of the city's fashion, cultural and financial centres, Mandarin Oriental, Milan features 104 guestrooms, including 36 suites and junior suites.*

*Occupying four 18th century buildings, the hotel was designed by Antonio Citterio Patricia Viel Interiors, a well-established Milanese interior design firm.*

*Celebrated chef Antonio Guida is at the helm of Michelin-starred Seta Restaurant and Mandarin Garden, both offering elegant indoor seating and al fresco dining in two elegant courtyards.*

*Filled with natural light, the Oriental and Taipan function rooms offer a flexible and versatile space that can be personalised and adapted to suit all types of events. Separated by a spacious foyer, the rooms combine to create a large and elegant venue for large functions. The hotel's inner courtyards, the Lounge, the Private Dining Room and the Loggia make for ideal venues for sophisticated events.*

*A haven dedicated to wellness, the 900 square-metre Spa offers a holistic approach to treatments and therapies that encourage rejuvenation and relaxation.*





DESTINATION

CORPORATE MEETINGS

Mindful Meetings

MAP

Oriental Room A/B

Taipan Room A/B

Foyer

Private Dining Room

SPECIAL EVENTS

WEDDING

CATERING

HOTEL

CONTACTS

SUBMIT ENQUIRY



# CORPORATE MEETINGS >>

  
mindful  
MEETINGS



---

DESTINATION

---

CORPORATE MEETINGS

---

Mindful Meetings

MAP

Oriental Room A/B

Taipan Room A/B

Foyer

Private Dining Room

---

SPECIAL EVENTS

---

WEDDING

---

CATERING

---

HOTEL

---

CONTACTS

---

SUBMIT ENQUIRY

---



# mindful MEETINGS

Be innovative. Be inspired. Be energized.

*Mindful Meetings by Mandarin Oriental is designed to enhance and energize meetings and conferences with creative solutions that are based on five key dimensions of wellness: nourishment, movement, stillness, connections and wellbeing.*

*Mandarin Oriental, Milan takes a progressive approach to meetings that gets results. The creative programme of wellness elements, specifically designed to inspire and engage the audience, will enhance the meeting process, leaving the participants feeling less stressed, more productive and ready to focus on the tasks at hand. Supported by cuisine specifically chosen to stimulate, nourish and fight fatigue, the innovative Mindful Meetings concept will change the way you view meetings forever.*



---

DESTINATION

---

CORPORATE MEETINGS

---

Mindful Meetings

MAP

Oriental Room A/B

Taipan Room A/B

Foyer

Private Dining Room

---

SPECIAL EVENTS

---

WEDDING

---

CATERING

---

HOTEL

---

CONTACTS

---

SUBMIT ENQUIRY

---

## FIVE KEY DIMENSIONS OF WELLNESS



### NOURISHMENT

*Fresh, local and organic, our menus are built around food that nourishes the body and brain.*



### MOVEMENT

*Ideas flow when meetings move. Our in-house specialists can tailor-make yoga and stretching sessions for breakouts.*



### STILLNESS

*Minds need space to think. Guided meditation, digital wellness tips and relaxation zones can all be incorporated into your meeting programme.*



### CONNECTIONS

*Create a positive environment for business by encouraging your participants to connect. From cocktail receptions and team-building challenges to taking part in our community programmes, we will help you create a strong connection.*



### WELLBEING

*Productivity is enhanced when you take time out. Spa time, stress management sessions and shakeout sessions are just some of the elements that can be added to your programme.*





MANDARIN ORIENTAL, MILAN OFFERS A MEETING PACKAGE BUILT AROUND THE 5 DIMENSIONS OF WELLNESS WITH SOME ELEMENTS AS STANDARD AND OTHERS AT AN ADDITIONAL COST.

[Download Mindful Meetings fact sheet >](#)

DESTINATION

CORPORATE MEETINGS

Mindful Meetings

MAP

Oriental Room A/B

Taipan Room A/B

Foyer

Private Dining Room

SPECIAL EVENTS

WEDDING

CATERING

HOTEL

CONTACTS

SUBMIT ENQUIRY



*NOURISHMENT*

*Mindful breaks  
Aromatic Waters  
Healthy selections  
Oriental menus  
Herbal tea selections*



*MOVEMENT*

*Guided stretching  
Positive yoga session  
Posture Tips sessions  
Muscular wake-up  
Stretching giveaways*



*STILLNESS*

*Digital Wellness tips  
Guided breathing  
Guided Shungite meditation  
Gong session  
5 elements Mindful*



*CONNECTIONS*

*Walking tour in Brera  
Tea tasting  
Icebreaker activities  
Our Mindful Moments Corner  
Digital Detox Corner*



*WELLBEING*

*Spa breaks with neck massages  
Guided pressure point massage  
Head and neck massage  
Dedicated giveaways  
Mindful Music during breaks*





# CORPORATE MEETINGS

CLICK ON THE VENUE TO VIEW THE DESCRIPTION

DESTINATION

CORPORATE MEETINGS

Mindful Meetings

MAP

Oriental Room A/B

Taipan Room A/B

Foyer

Private Dining Room

SPECIAL EVENTS

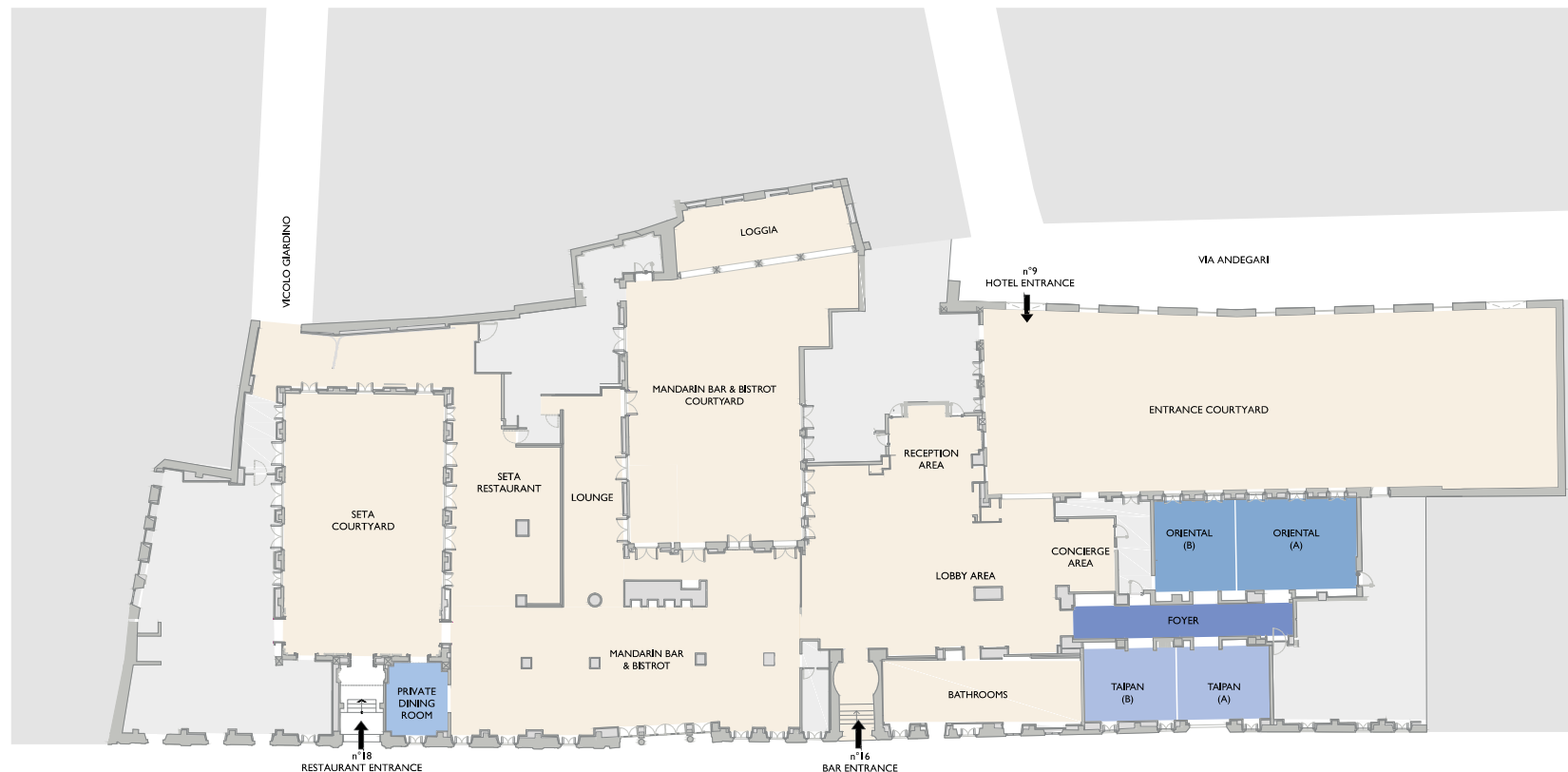
WEDDING

CATERING

HOTEL

CONTACTS

SUBMIT ENQUIRY



VIA MONTE DI PIETÀ



# ORIENTAL ROOM A/B

---

## DESTINATION

---

### CORPORATE MEETINGS

---

Mindful Meetings

## MAP

**Oriental Room A/B**

Taipan Room A/B

Foyer

Private Dining Room

---

## SPECIAL EVENTS

---

## WEDDING

---

## CATERING

---

## HOTEL

---

## CONTACTS

---

## SUBMIT ENQUIRY

---

*Located on the ground floor, it is equipped with state-of-the-art technology and can be divided into smaller spaces with retractable walls.*

*Filled with natural light, it has large windows overlooking one of the hotel's leafy courtyards and quiet Via Andegari.*

*Featuring oak floors and modern wall panelling, the room is appointed in a neutral colour scheme that allows for a tailored setting. The Oriental Room seats up to 60 guests and can accommodate 90 for a standing reception.*



CAPACITY	TOT	A	B
Boardroom	32/34	16	10
Classroom	30	24	18
Theatre	74	40	30
Cabaret	36	20	20
U-Shape	30	20	10
Hollow Square	36	24	14
Standing Cocktail	90	55	45
Round (180 cm)	60	40	24

## SIZE

Area m <sup>2</sup>	84,30	49.70	33.30
Area sq.ft	907.30	534.96	358.43
Dimensions m	13,90 x 6,06	8,20 x 6,06	5,50 x 6,06
Dimensions ft.	45.60 x 19.80	26.90 x 19.80	18.04 x 19.80
Height m	3	3	3
Height ft.	9.84	9.84	9.84

[Download floorplan](#)



# TAIPAN ROOM A/B

---

## DESTINATION

### CORPORATE MEETINGS

---

Mindful Meetings

## MAP

Oriental Room A/B

**Taipan Room A/B**

Foyer

Private Dining Room

---

## SPECIAL EVENTS

### WEDDING

---

### CATERING

---

## HOTEL

## CONTACTS

---

## SUBMIT ENQUIRY

---

*Located on the ground floor, it is equipped with state-of-the-art technology and can be divided into smaller spaces with retractable walls.*

*Filled with natural light, it has large windows overlooking Via Monte di Pietà. Featuring oak floors and modern wall panelling, the room is appointed in a neutral colour scheme that allows for a tailored setting.*

*The room's maximum capacity is 32 guests seated and 60 for a standing reception. The Oriental Room and the Taipan Room combine to create a spacious and elegant venue for large events.*



CAPACITY	TOT	A	B
Boardroom	28	12	12
Classroom	20	10	10
Theatre	40	20	20
Cabaret	24	12	12
U-Shape	26	14	14
Hollow Square	28	16	16
Standing Cocktail	60	30	30
Round (180 cm)	32	16	16

## SIZE

Area m <sup>2</sup>	58,00	28,30	28,30
Area sq.ft	624,30	304,61	304,61
Dimensions m	12,70 x 4,50	6,30 x 4,50	6,30 x 4,50
Dimensions ft.	41.66 x 14.76	20.66 x 14.76	20.66 x 14.76
Height m	3	3	3
Height ft.	9.84	9.84	9.84

[Download floorplan](#)

# FOYER

---

## DESTINATION

---

## CORPORATE MEETINGS

---

Mindful Meetings

### MAP

Oriental Room A/B

Taipan Room A/B

Foyer

Private Dining Room

---

## SPECIAL EVENTS

---

## WEDDING

---

---

## CATERING

---

---

## HOTEL

---

---

## CONTACTS

---

---

## SUBMIT ENQUIRY

---

*Accessible from the hotel lobby, the spacious foyer that separates the Oriental Room and the Taipan Room makes for the ideal welcome and registration area for guests.*

*The foyer also serves as a gathering space when the area is privatised for large events. For added flexibility, the area has its own kitchen.*

---

## CAPACITY

Standing Cocktail	25
-------------------	----

---

## SIZE

Area m <sup>2</sup>	35.00
---------------------	-------

Area sq.ft	376.74
------------	--------

Dimensions m	2,30 x 15,25
--------------	--------------

Dimensions ft.	7.00 x 50.00
----------------	--------------

Height m	3,7
----------	-----

Heigh ft.	12.00
-----------	-------

---



[Download floorplan](#)



# PRIVATE DINING ROOM

---

## DESTINATION

---

## CORPORATE MEETINGS

---

Mindful Meetings

## MAP

Oriental Room A/B

Taipan Room A/B

Foyer

**Private Dining Room**

---

## SPECIAL EVENTS

---

WEDDING

CATERING

HOTEL

CONTACTS

SUBMIT ENQUIRY

---

*With a maximum capacity of eight people, the private dining room is ideal for intimate events, private parties and board meetings. Looking out onto via Monte di Pietà, the room features signature furnishing and wallpaper by Fornasetti, that add a sense of imagination and exclusivity. Bespoke menus are available.*



## CAPACITY

---

Boardroom	8
Standard	8

---

## SIZE

---

Area m <sup>2</sup>	16,00
Area sq.ft	172,22
Dimensions m	2,60 x 4,50
Dimensions ft.	8.00 x 14.00
Height m	3,2
Height ft.	10.00

---

[Download floorplan](#)





# SPECIAL EVENTS >

---

DESTINATION

---

CORPORATE MEETINGS

---

SPECIAL EVENTS

---

MAP

Oriental Room A/B

Taipan Room A/B

Mandarin Garden

Lounge

Bar Courtyard

Loggia

Seta Restaurant

Seta Courtyard

Entrance Courtyard

---

WEDDING

---

CATERING

---

HOTEL

---

CONTACTS

---

SUBMIT ENQUIRY

---



# SPECIAL EVENTS

CLICK ON THE VENUE TO VIEW THE DESCRIPTION

---

DESTINATION

---

CORPORATE MEETINGS

---

SPECIAL EVENTS

---

## MAP

Oriental Room A/B

Taipan Room A/B

Mandarin Garden

Lounge

Bar Courtyard

Loggia

Seta Restaurant

Seta Courtyard

Entrance Courtyard

---

WEDDING

---

CATERING

---

HOTEL

---

CONTACTS

---

SUBMIT ENQUIRY

---



VIA MONTE DI PIETÀ



# ORIENTAL ROOM A/B

---

DESTINATION

---

CORPORATE MEETINGS

---

SPECIAL EVENTS

MAP

**Oriental Room A/B**

Taipan Room A/B

Mandarin Garden

Lounge

Bar Courtyard

Loggia

Seta Restaurant

Seta Courtyard

Entrance Courtyard

---

WEDDING

---

CATERING

---

HOTEL

---

CONTACTS

---

SUBMIT ENQUIRY

*Located on the ground floor, the Oriental Room is filled with natural light. Large sun-drenched windows look out over the hotel's entrance courtyard, while lofty ceilings create a sense of space. The room can be divided into two smaller venues with retractable walls and is appointed in a neutral colour scheme allowing for a tailored setting. The Oriental Room can accommodate 90 for a standing reception and up to 60 for a seated dinner.*



CAPACITY	TOT	A	B
Imperial table	32/34	16	10
Standing Cocktail	90	55	45
Round (180 cm)	60	40	24

SIZE

Area m <sup>2</sup>	84.30	49.70	33.30
Area sq.ft	907.30	534.96	358.43
Dimensions m	13.90 x 6.06	8.20 x 6.06	5.50 x 6.06
Dimensions ft.	45.60 x 19.80	26.90 x 19.80	18.04 x 19.80
Height m	3	3	3
Height ft.	9.84	9.84	9.84

[Download floorplan](#)



# TAIPAN ROOM A/B

---

DESTINATION

CORPORATE MEETINGS

SPECIAL EVENTS

---

MAP

Oriental Room A/B

**Taipan Room A/B**

Mandarin Garden

Lounge

Bar Courtyard

Loggia

Seta Restaurant

Seta Courtyard

Entrance Courtyard

---

WEDDING

CATERING

HOTEL

CONTACTS

SUBMIT ENQUIRY

*Located on the ground floor, the Taipan Room is filled with natural light. Large sun-drenched windows look out over the quiet Via Monte di Pietà, while lofty ceilings create a sense of space.*

*The room can be divided into two smaller venues with retractable walls and is appointed in a neutral colour scheme allowing for a tailored setting. The maximum capacity of the Taipan Room is 60 for a standing reception and up to 32 for a seated dinner.*



CAPACITY	TOT	A	B
Imperial table	28	12	12
Standing Cocktail	60	30	30
Round (180 cm)	32	16	16

SIZE

Area m <sup>2</sup>	58,00	28.30	28.30
Area sq.ft	624.30	304.61	304.61
Dimensions m	12,70 x 4,50	6,30 x 4,50	6,30 x 4,50
Dimensions ft.	41.66 x 14.76	20.66 x 14.76	20.66 x 14.76
Height m	3	3	3
Height ft.	9.84	9.84	9.84

[Download floorplan](#)

# MANDARIN GARDEN

DESTINATION

CORPORATE MEETINGS

SPECIAL EVENTS

MAP

Oriental Room A/B

Taipan Room A/B

Mandarin Garden

Lounge

Bar Courtyard

Loggia

Seta Restaurant

Seta Courtyard

Entrance Courtyard

WEDDING

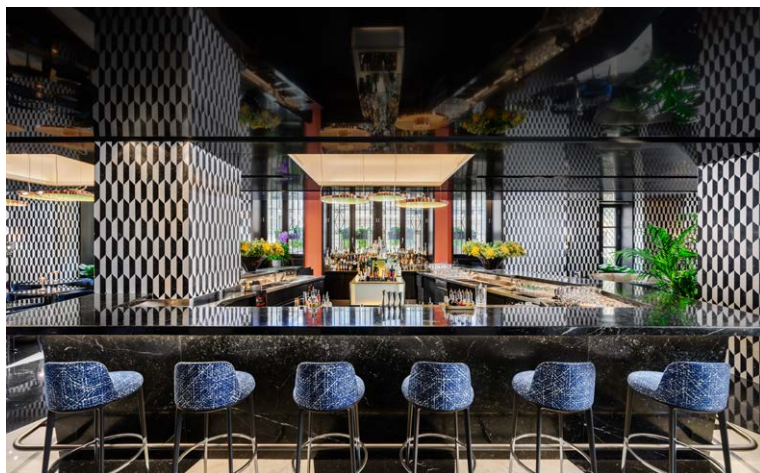
CATERING

HOTEL

CONTACTS

SUBMIT ENQUIRY

*Mandarin Garden is a stylish and vibrant venue, nestled in the heart of the hotel, with a luxuriant courtyard perfect for relaxing at any time of day. Open from early morning to late night, the secluded space welcomes locals and hotel guests alike with its immersive atmosphere – a compelling combination of lush plant life, Italian design, and subtle Oriental touches. Offering a selection of delectable pastries for breakfast and modern Italian cuisine for lunch and dinner, it is also the place to try inventive twist on classic cocktails and original creations. Mandarin Garden is available for exclusive hire for up to 250 guests.*



CAPACITY

Standing Cocktail 250

Standard 85

SIZE

Area m<sup>2</sup> 200,00

Area sq.ft 2152.78

Dimensions m 26,00 x 7,50

Dimensions ft. 85.00 x 24.00

Height m 3,2

Heigh ft. 10.00

[Download floorplan](#)



# LOUNGE

---

## DESTINATION

---

## CORPORATE MEETINGS

---

## SPECIAL EVENTS

---

### MAP

Oriental Room A/B

Taipan Room A/B

Mandarin Garden

**Lounge**

Bar Courtyard

Loggia

Seta Restaurant

Seta Courtyard

Entrance Courtyard

---

## WEDDING

---

## CATERING

---

## HOTEL

---

## CONTACTS

---

## SUBMIT ENQUIRY

---

*The Lounge of the Mandarin Garden is an exclusive space with lofty ceilings and wide windows overlooking the inner courtyard. More restrained than the rest of the Mandarin Garden, but equally dramatic, the Lounge is the perfect place to host private events while still enjoying the bar's bold design and vibrant atmosphere.*

### CAPACITY

Standing Cocktail	30
Standard	20

### SIZE

Area m <sup>2</sup>	93,00
Area sq.ft	1001.04
Dimensions m	11,50 x 4,50
Dimensions ft.	37.00 x 14.00
Height m	6
Height ft.	19.00



[Download floorplan](#)

# BAR COURTYARD

---

DESTINATION

---

CORPORATE MEETINGS

---

SPECIAL EVENTS

---

MAP

Oriental Room A/B

Taipan Room A/B

Mandarin Garden

Lounge

**Bar Courtyard**

Loggia

Seta Restaurant

Seta Courtyard

Entrance Courtyard

---

WEDDING

---

CATERING

---

HOTEL

---

CONTACTS

---

SUBMIT ENQUIRY

---

*The courtyard of the Mandarin Garden is an elegant outdoor area that provides a welcome respite from the hustle-and-bustle of the city. Furnished with sofas and lounge chairs, it has a relaxed bistro corner offering all-day dining. Its stylish ambience makes for the perfect al fresco cocktail venue. The Mandarin Garden Courtyard is available for exclusive hire.*



CAPACITY

---

Standing Cocktail	150
-------------------	-----

---

Standard	45
----------	----

---

SIZE

---

Area m <sup>2</sup>	238,00
---------------------	--------

---

Area sq.ft	2561,81
------------	---------

---

Dimensions m	19,00 x 14,10
--------------	---------------

---

Dimensions ft.	62,00 x 46,00
----------------	---------------

---

[Download floorplan](#)



# LOGGIA

---

DESTINATION

---

CORPORATE MEETINGS

---

SPECIAL EVENTS

---

MAP

Oriental Room A/B

Taipan Room A/B

Mandarin Garden

Lounge

Bar Courtyard

**Loggia**

Seta Restaurant

Seta Courtyard

Entrance Courtyard

---

WEDDING

---

CATERING

---

HOTEL

---

CONTACTS

---

SUBMIT ENQUIRY

---

*Located in a hidden corner of the Mandarin Bar & Bistrot Courtyard, the Loggia is available for exclusive private hire for cocktail parties or seated dinners.*

*Enclosed by original columns, it is the most romantic part of Conte Confalonieri's historical manor house, providing a striking balance between old and new.*

## CAPACITY

Standing Cocktail	40
Standard	30
Dinner (round)	30

## SIZE

Area m <sup>2</sup>	51,00
Area sq.ft	548.96
Dimensions m	4,20 x 12,10
Dimensions ft.	13.00 x 39.00
Height m	4,2
Heigh ft.	13.00



[Download floorplan](#)

# SETA RESTAURANT

---

DESTINATION

---

CORPORATE MEETINGS

---

SPECIAL EVENTS

---

MAP

Oriental Room A/B

Taipan Room A/B

Mandarin Garden

Lounge

Bar Courtyard

Loggia

**Seta Restaurant**

Seta Courtyard

Entrance Courtyard

---

WEDDING

---

CATERING

---

HOTEL

---

CONTACTS

---

SUBMIT ENQUIRY

---

*Run by Executive Chef Antonio Guida, two Michelin-starred Seta Restaurant gives onto one of the hotel's two courtyards. Wide glass windows allow inner and outer spaces to merge into a harmonised whole, and guests can watch the chefs at work at the open-plan kitchen. Seta's timeless design offers year-round inside seating and the option of al fresco dining in a beautiful courtyard.*



---

CAPACITY

---

Standard	60
----------	----

---

SIZE

---

Area m <sup>2</sup>	130,00
Area sq.ft	1399.31
Dimensions m	43,00 x 3,50
Dimensions ft.	141.00 x 11.00
Height m	3,2
Height ft.	10.00

---



[Download floorplan](#)



# SETA COURTYARD

---

DESTINATION

---

CORPORATE MEETINGS

---

SPECIAL EVENTS

---

MAP

Oriental Room A/B

Taipan Room A/B

Mandarin Garden

Lounge

Bar Courtyard

Loggia

Seta Restaurant

Seta Courtyard

Entrance Courtyard

---

WEDDING

---

CATERING

---

HOTEL

---

CONTACTS

---

SUBMIT ENQUIRY

---

*Recalling the impressive courtyards that characterise Milan's noble residences, the atmospheric Seta Courtyard is the ideal place for a welcome cocktail. Featuring an open-plan kitchen, the courtyard has a fully retractable roof that provides an al fresco experience year-round.*



---

CAPACITY

---

Standing Cocktail 60\*

---

Standard 24

---

---

SIZE

---

Area m<sup>2</sup> 125,00

---

Area sq.ft 1345.49

---

Dimensions m 11,10 x 11,00

---

Dimensions ft. 36.00 x 36.00

---

*\*Valid only in case of  
full restaurant privatization*

[Download floorplan](#)

# ENTRANCE COURTYARD

---

DESTINATION

---

CORPORATE MEETINGS

---

SPECIAL EVENTS

---

MAP

Oriental Room A/B

Taipan Room A/B

Mandarin Garden

Lounge

Bar Courtyard

Loggia

Seta Restaurant

Seta Courtyard

**Entrance Courtyard**

---

WEDDING

---

CATERING

---

HOTEL

---

CONTACTS

---

SUBMIT ENQUIRY

---



*One of the most historically significant parts of the hotel, the entrance courtyard is where Conte Confalonieri once welcomed his guests before accompanying them to the private apartments. The courtyard's rectangular shape makes it ideal to host cocktail receptions or gala dinners in an elegant setting. It can be fully privatised for any type of event.*





[DESTINATION](#)

[CORPORATE MEETINGS](#)

[SPECIAL EVENTS](#)

[WEDDING](#)

[CATERING](#)

[HOTEL](#)

[CONTACTS](#)

[SUBMIT ENQUIRY](#)



# WEDDING >

# WEDDING



*Mandarin Oriental, Milan offers a chic and sophisticated venue for weddings and celebrations. Event spaces include beautiful and elegant private rooms and two leafy courtyards to suit a range of celebrations, from intimate gatherings to large receptions. The hotel's dedicated private events team will work closely with the bride and groom to plan every aspect of their special day and ensure that everything runs seamlessly.*

## *CATERING*

*Under the watchful eye of celebrated Executive Chef Antonio Guida, Mandarin Oriental, Milan's talented catering team will design a customised wedding menu with the bride and groom.*

## *THE SPA*

*Guests can enjoy a pre-wedding pamper at the Spa, which offers a range of holistic treatments in stylishly appointed surrounds. Soothing treatments and therapies are designed to ease pre-wedding stress, leaving both the bride and the groom feeling rejuvenated and relaxed. Guests are invited to contact the Spa for a list of recommended treatments.*

## *WEDDINGS AND HONEYMOONS*

### *BY MANDARIN ORIENTAL*

*Weddings and Honeymoons by Mandarin Oriental offers guests a complimentary honeymoon night along with a host of exclusive benefits at Mandarin Oriental hotels around the world. Ask us for further details.*

---

DESTINATION

---

CORPORATE MEETINGS

---

SPECIAL EVENTS

---

WEDDING

---

CATERING

---

HOTEL

---

CONTACTS

---

SUBMIT ENQUIRY

---





# WEDDING

---

DESTINATION

---

CORPORATE MEETINGS

---

SPECIAL EVENTS

---

WEDDING

---

CATERING

---

HOTEL

---

CONTACTS

---

SUBMIT ENQUIRY

---



# CATERING >

DESTINATION

CORPORATE MEETINGS

SPECIAL EVENTS

WEDDING

CATERING

HOTEL

CONTACTS

SUBMIT ENQUIRY





# CATERING

---

DESTINATION

---

CORPORATE MEETINGS

---

SPECIAL EVENTS

---

WEDDING

---

CATERING

---

HOTEL

---

CONTACTS

---

SUBMIT ENQUIRY

---

*Michelin-starred Executive Chef Antonio Guida and his team create sumptuous canapés and bespoke menus to suit all types of events, from sophisticated cocktail parties to elegant gala dinners. Offering one of Milan's most in-demand dining experiences, Chef Guida's cuisine elevates humble ingredients as the star of his dishes, bringing out their true flavours in a creative and inspired way.*

*High-end desserts are handcrafted by talented Pastry Chef Marco Pinna, whose choice of imaginative ingredients complement the lunch and dinner menus. Exceptional service and exquisite catering make the hotel the perfect venue for any event. Off-site catering services are also available, with a range of options to fit guests' catering needs.*



# CATERING

---

DESTINATION

---

CORPORATE MEETINGS

---

SPECIAL EVENTS

---

WEDDING

---

CATERING

---

HOTEL

---

CONTACTS

---

SUBMIT ENQUIRY

---





---

DESTINATION

---

CORPORATE MEETINGS

---

SPECIAL EVENTS

---

WEDDING

---

CATERING

---

HOTEL

Rooms & Suites

Michelin starred Chef  
Antonio Guida

SPA

Video

---

CONTACTS

---

SUBMIT ENQUIRY

MANDARIN ORIENTAL

HOTEL >





# ROOMS & SUITES

---

DESTINATION

---

CORPORATE MEETINGS

---

SPECIAL EVENTS

---

WEDDING

---

CATERING

---

HOTEL

[Rooms & Suites](#)

[Michelin starred Chef  
Antonio Guida](#)

[SPA](#)

[Video](#)

---

CONTACTS

---

SUBMIT ENQUIRY

---



*Mandarin Oriental, Milan offers 68 guestrooms and 36 suites and junior suites spread over five floors. Rooms come in a variety of shapes and sizes and feature a contemporary design. Some overlook the interior courtyards, while others look out over Milan's rooftops and picturesque historic streets. The Presidential Suite and the two Speciality Suites reflect the highest levels of Milanese creativity and style, and are the ultimate expression of luxury and comfort.*



# MICHELIN STARRED CHEF ANTONIO GUIDA

---

DESTINATION

---

CORPORATE MEETINGS

---

SPECIAL EVENTS

---

WEDDING

---

CATERING

---

HOTEL

---

[Rooms & Suites](#)

[Michelin starred Chef  
Antonio Guida](#)

[SPA](#)

[Video](#)

---

CONTACTS

---

SUBMIT ENQUIRY

---



*Acclaimed Michelin-starred chef Antonio Guida is the Executive Chef of Mandarin Oriental, Milan and is responsible for all culinary aspects of the hotel. Our experienced team provides the highest standards of catering and service for all occasions.*

# SPA

---

DESTINATION

---

CORPORATE MEETINGS

---

SPECIAL EVENTS

---

WEDDING

---

CATERING

---

HOTEL

---

Rooms & Suites

Michelin starred Chef  
Antonio Guida

SPA

Video

---

CONTACTS

---

SUBMIT ENQUIRY

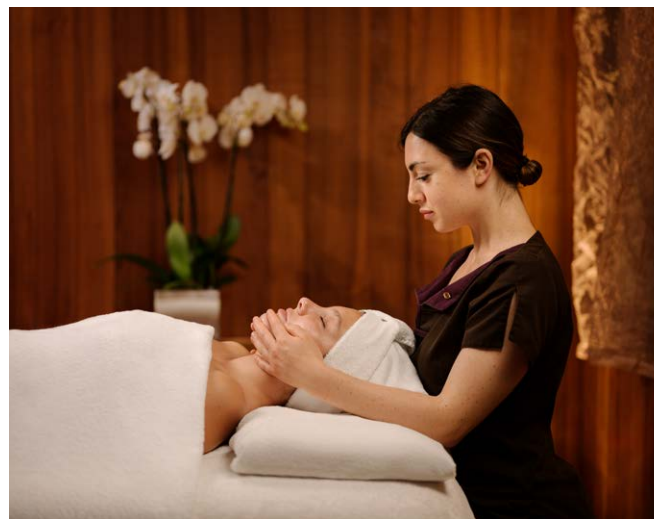
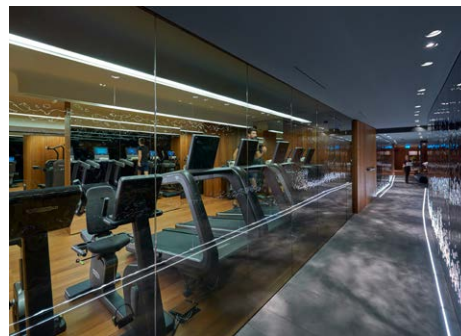
---

*Based on the Chinese philosophy of the five elements, the Spa features a harmonious design and environment that encourage relaxation and rejuvenation.*

*It offers holistic treatments that blend the best of Western and Eastern therapies, combining Mandarin Oriental's long-standing international expertise and treatment know how.*

*The Spa has a state of the art fitness centre and indoor swimming pool that is one of the city centre's largest, while the six private treatment rooms include a dedicated massage room and spacious SPA suite.*

*As well as spa and body treatments, a range of beauty and salon services are offered at the hotel's beauty studio and hair salon.*





# VIDEO

---

DESTINATION

---

CORPORATE MEETINGS

---

SPECIAL EVENTS

---

WEDDING

---

CATERING

---

HOTEL

Rooms & Suites

Michelin starred Chef  
Antonio Guida

SPA

Video

---

CONTACTS

---

SUBMIT ENQUIRY

---



THE MANDARIN ORIENTAL EXPERIENCE

# CONTACTS

---

DESTINATION

---

CORPORATE MEETINGS

---

SPECIAL EVENTS

---

WEDDING

---

CATERING

---

HOTEL

---

CONTACTS

---

SUBMIT ENQUIRY

---

## GROUPS & EVENTS

[\*momln-events@mohg.com\*](mailto:momln-events@mohg.com)

## SALES & MARKETING

[\*momln-sales@mohg.com\*](mailto:momln-sales@mohg.com)

## GENERAL INFORMATION

*Mandarin Oriental, Milan*  
*Via Andegari, 9 - 20121 Milan, Italy*  
*Tel.39 02 8731 8888*  
[\*www.mandarinoriental.com/milan\*](http://www.mandarinoriental.com/milan)

