



# Akira Back

EXPERIENCE THE WORLD OF AKIRA BACK



MANDARIN ORIENTAL  
MAYFAIR  
LONDON





# EXPERIENCE THE WORLD OF AKIRA BACK

Celebrate in one of London's most exclusive neighbourhoods with the exceptional dining experience at Akira Back.

Indulge in modern Japanese cuisine within a distinctive setting designed to impress your guests. Begin your evening with a champagne reception, followed by a mouth-watering selection of Akira Back signature dishes or the stunning ABar Rooftop.

Afterwards, continue the night at ABar Lounge, Mayfair's newest fashionable cocktail hotspot, or the stunning ABar Rooftop, where you can enjoy expertly crafted artistic cocktails.

Let us handle every detail of your occasion, ensuring a seamless experience from start to finish. Immerse yourself in the vibrant atmosphere of Akira Back with our tailored packages.





# TRADITIONAL INFLUENCES, MODERN INTERPRETATION



Designed with exclusivity in mind, Akira Back offers three private dining rooms, perfect for any occasion.

Our menus feature authentic recipes showcasing modern Japanese dishes, using local, organic and sustainable ingredients.

Delight and impress your guests with mouth-watering modern Japanese dishes, paired with hand-selected wines by our expert sommeliers.

Whether you're planning a celebratory sit-down dinner with a champagne reception or a business breakfast meeting, our venue is suitable for all your needs.







WATER

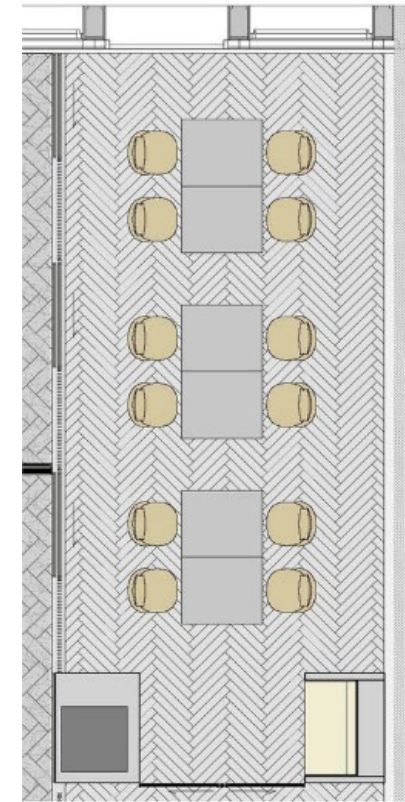
SUI

水

The most distinguished of Akira Back's private dining rooms, Sui, meaning 'water' in Japanese, boasts a remarkable early example of an art deco interior.

With its striking installations and unique design, Sui offers a memorable setting for any event, whether business or pleasure.

For larger events Sui is connected to Kai for up to 34 guests for dinner or 50 for a reception.



SIZE

24.9SQM/ 267.5SQF

DIMENSIONS (L x W)

3.5M x 7M

CAPACITY

DINNER

18

RECEPTION

25

THEATRE

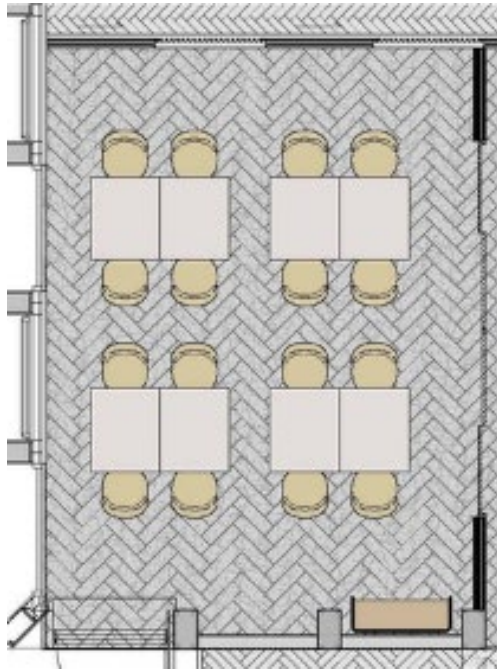
12

BOARDROOM

14







SIZE

27.6SQM / 297SQF

DIMENSIONS (L x W)

6M x 4.6M

CAPACITY

DINNER

20

RECEPTION

30

THEATRE

20

BOARDROOM

20

Perfect for all occasions, gather your loved ones for a celebration like no other or unite your peers for business in Ka, meaning 'Fire' in Japanese.

Ka welcomes 20 guests for an Akira Back dining experience or up to 30 for a canapé reception. Seating arrangements are adjustable for theatre and boardroom styles. Enquire with our team to create a tailored package that meets your needs.

FIRE

KA

火



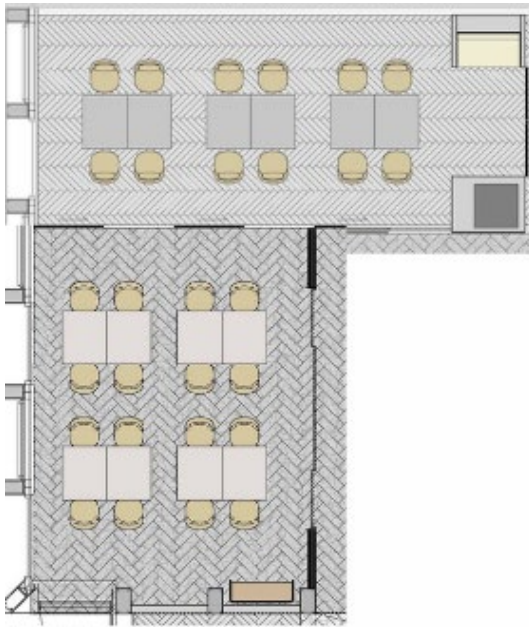


WATER + FIRE

# SUI + KA

For larger gatherings, this elegant L-shaped space is ideal for hosting cocktail parties or celebratory dinners.

Whether you're dining, networking, or conducting meetings, the impeccable flow between rooms ensures guests enjoy a seamless and spacious experience while preserving the intimacy and exclusivity of a private setting.



## SIZE

52.5SQM / 564.6SQF

## DIMENSIONS (L x W)

9.6M x 7M

## CAPACITY

DINNER

34

RECEPTION

50

THEATRE

20

BOARDROOM

25



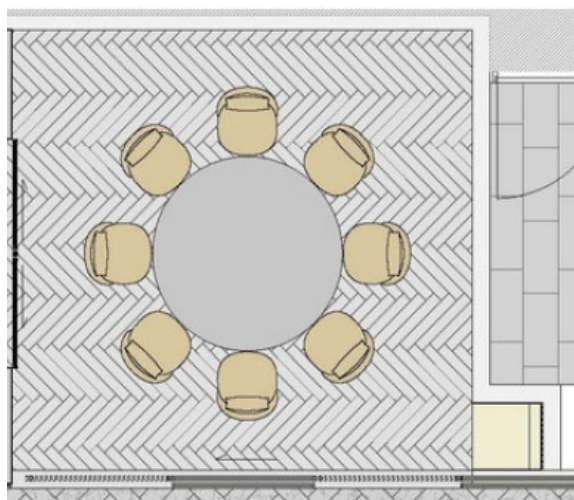


Our most intimate private dining room, Chi, meaning 'earth' in Japanese, offers a unique experience for up to 6 diners or 15 guests for a reception.

With its natural interior and a pop of character, Chi is the ideal location for a cosy celebration or morning meeting.

EARTH  
CHI

地



## SIZE

13 SQM / 140 SQF

## DIMENSIONS (L x W)

3.65M x 5.56M

## CAPACITY

DINNER

6

RECEPTION

15

THEATRE

12

BOARDROOM

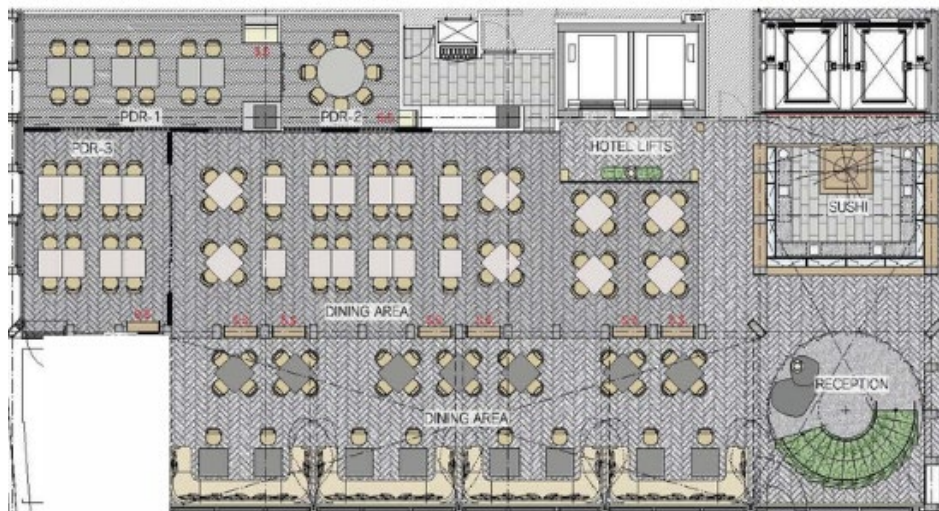
-





# Akira Back

Step into a warm and inviting atmosphere at Akira Back, where the dramatic design elements of earth, wind and water are seamlessly integrated. The breathtaking triple-height sky roof and the elegant marble circular staircase create a stunning entrance that complements the exquisite décor, designed to stimulate the senses. This dramatic setting is perfect for enjoying award-winning Chef Akira Back's signature modern Japanese dishes. Our extensive wine list and the intuitive, expert service for which Mandarin Oriental is renowned complete the experience.



## SIZE

27.6SQM / 297SQF

## DIMENSIONS (L x W)

6M x 4.6M

## CAPACITY

DINNER

145

RECEPTION

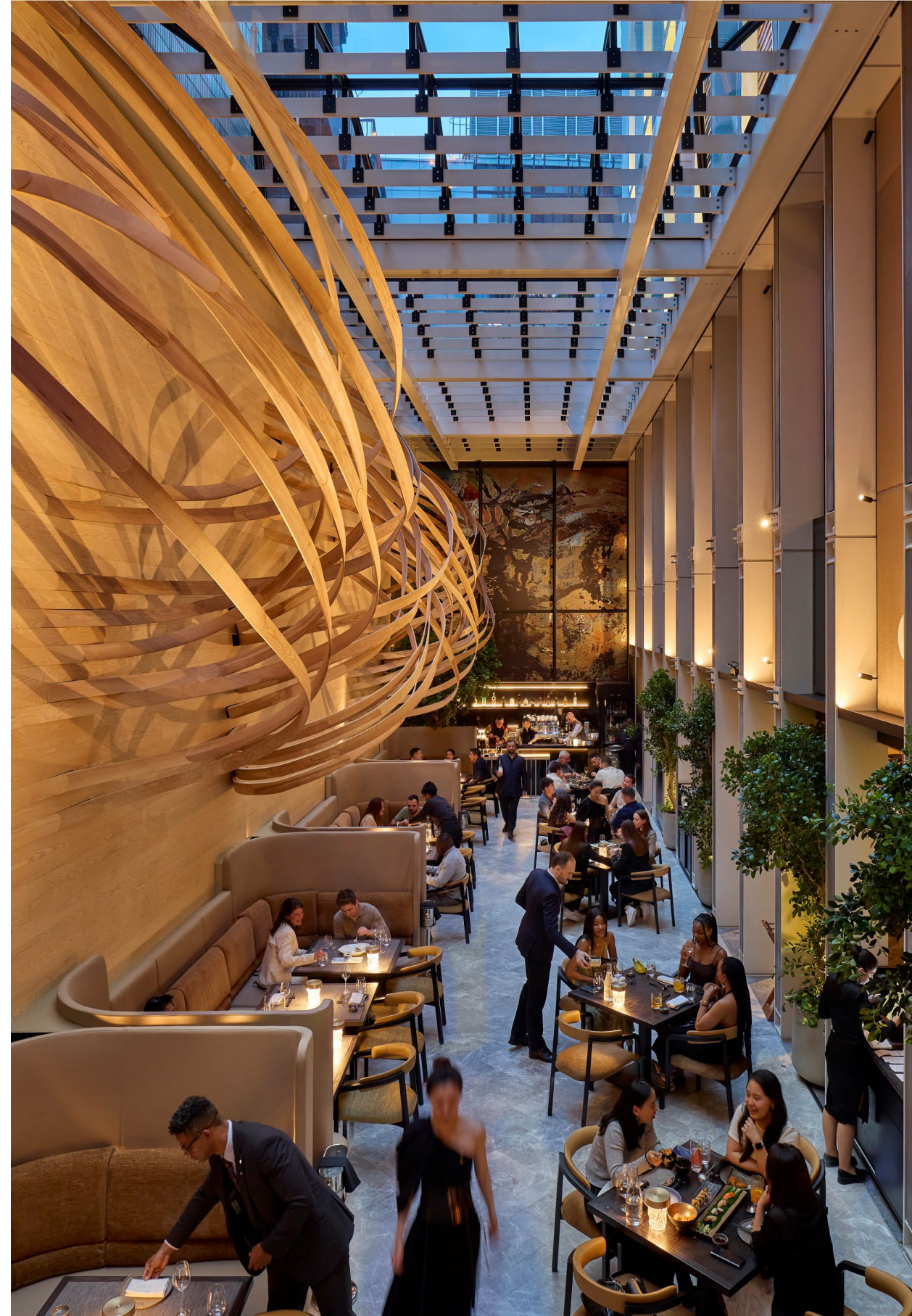
250

THEATRE

-

BOARDROOM

-

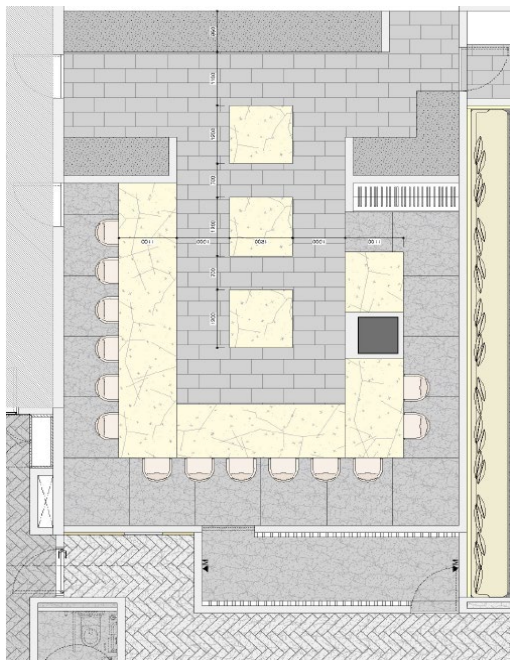






An immersive dining experience featuring a Korean-inspired tasting menu at an intimate chef's table. Guests are invited to watch as artfully curated and prepared dishes integrate unique Korean traditions and techniques.

Named after the Korean word for "expert," Dosa offers just 14 guests the chance to experience Chef Back's culinary journey. Diners can closely observe the masterful preparation of sophisticated dishes in a dining room influenced by the mineral elements of the earth, with suspended sculptures designed to stimulate the senses. Available for exclusive hire upon request.



### SIZE

53SQM / 570.5SQF

### DIMENSIONS (L x W)

6M x 4.6M

### CAPACITY

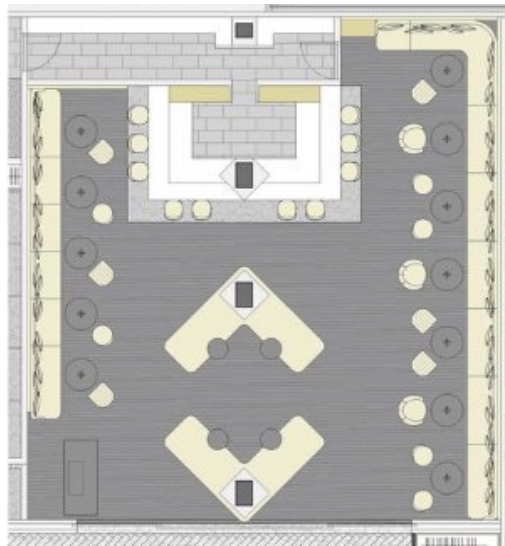
DINNER  
14  
RECEPTION  
-  
THEATRE  
-  
BOARDROOM  
-







An atmospheric, fashionable cocktail bar in the heart of Mayfair offering a unique venue fit for the ultimate celebration. Hire exclusively for up to 85 guests or secure the best spot at the bar for a more intimate occasion. Our dedicated team specialise in helping you create a truly unforgettable event with carefully curated artistic cocktails and the opportunity to have live DJ music.



SIZE

87SQM / 936.5SQF

DIMENSIONS (L x W)

6M x 4.6M

CAPACITY

DINNER

-

RECEPTION

85

THEATRE

-

BOARDROOM

-

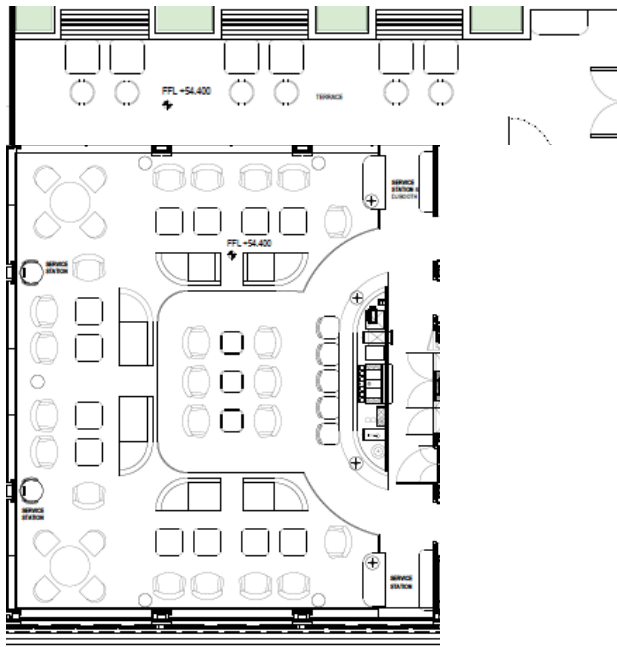






ABar Rooftop at Mandarin Oriental Mayfair introduces a fresh perspective to London's bar scene. This 50-seat rooftop bar with an outdoor terrace offers sweeping views over Mayfair to landmarks like Hampstead Heath and the London Eye. Its cocktail menu takes a creative approach to classics, blending unique flavours and seasonal ingredients inspired by London's ever-changing seasons.

Evoking the city's energy, ABar Rooftop pairs expertly crafted cocktails with Chef Akira Back's menu, featuring light daytime dishes and savoury evening options. The elegant interior, with sky-inspired hues and a cloud-like chandelier, enhances the experience, while floor-to-ceiling windows frame iconic views of the city. Open daily, with DJ sets from Thursday to Saturday, ABar Rooftop is a destination for an exclusive, elevated experience.



SIZE

Indoor: 97SQM / 1044SQF  
 Outdoor: 37SQM/398.2SQF

DIMENSIONS (L x W)

9.3M x 10.5M

CAPACITY

DINNER

-

RECEPTION

50

THEATRE

-

BOARDROOM

-



## EVENT ROOM CAPACITIES

Allow us to host your party from start to finish and immerse yourself within the vibrant atmosphere of Akira Back with our tailored packages.

| SUI<br>18 SEATER | KA<br>20 SEATER | SUI+KA<br>34 SEATER | CHI<br>6 SEATER | AKIRA BACK<br>RESTAURANT | DOSA<br>CHEFS TABLE | ABAR<br>LOUNGE | ABAR<br>ROOFTOP |
|------------------|-----------------|---------------------|-----------------|--------------------------|---------------------|----------------|-----------------|
| DINNER           | DINNER          | DINNER              | DINNER          | DINNER                   | DINNER              | DINNER         | DINNER          |
| 18               | 20              | 34                  | 6               | 145                      | 14                  | -              | -               |
| RECEPTION        | RECEPTION       | RECEPTION           | RECEPTION       | RECEPTION                | RECEPTION           | RECEPTION      | RECEPTION       |
| 25               | 30              | 50                  | 15              | 250                      | -                   | 75             | 50              |
| THEATRE          | THEATRE         | THEATRE             | THEATRE         | THEATRE                  | THEATRE             | THEATRE        | THEATRE         |
| 12               | 20              | 20                  | 12              | -                        | -                   | -              | -               |
| BOARDROOM        | BOARDROOM       | BOARDROOM           | BOARDROOM       | BOARDROOM                | BOARDROOM           | BOARDROOM      | BOARDROOM       |
| 14               | 20              | 25                  | -               | -                        | -                   | -              | -               |





MANDARIN ORIENTAL  
MAYFAIR  
LONDON

22 Hanover Square  
Mayfair, London, W1S 1JP, United Kingdom  
Telephone + 44 (0)20 7889 8888  
[mandarinoriental.com/mayfair](http://mandarinoriental.com/mayfair)