



# THE ROSEBERRY

## CHILDREN AFTERNOON TEA

£32

Due to limited availability, this menu is to be pre-ordered.

### SELECTION OF SANDWICHES

Cucumber and cream cheese  
Peanut butter and grape jam  
Turkey ham and cheddar cheese  
Nutella, banana and cookie

### SELECTION OF HAND-MADE PASTRIES

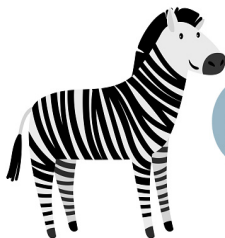
Zebra lollipop  
Pistachio mamba cake  
Vanilla and cream cheese cupcake  
Butterfly pearl

### SELECTION OF HOT DRINKS

Valrhona hot chocolate  
Chocolate milk with cream  
Decaffeinated  
English breakfast tea  
Mango black tea  
Peppermint  
Fresh mint  
Chamomile

### MINI SCONES PLAIN AND RAISIN WITH JAM AND CLOTTED CREAM

Pastry Chef: Paul Thieblemont



Please let us know if you have any specific dietary requirements and we shall be delighted to assist you with detailed allergen information regarding all dishes and drinks on our menus. Kindly note that our dishes are not produced in an entirely allergen free environment. Please note that all food prices are inclusive of VAT of 5%. A discretionary service charge of 12.5% will be added to your bill. To respect the privacy of all our guests, we kindly ask that you refrain from flash or intrusive photography.