

THE ROYAL SUITE

Our Royal Suite gives you a private Knightsbridge apartment, with a grand balcony overlooking Hyde Park. You will find the deeply comfortable interiors are furnished to the highest levels of contemporary luxury. We welcome you to this fine residence, with all the warmth of our legendary Mandarin Oriental service.





A regal living space with formal dining room and private kitchen.

On the magnificent balcony, sweeping the length of the suite, you can host up to 40 guests for a reception.





Your suite has three bedrooms. The master bedroom has a spacious dressing room, the most dramatic bathroom crowned with a unique crystal chandelier and your own private steam room.



ORMONDE JAYNE
London Perfumery
ISFARKAND
BODY LOTION
IT CORPOREL

ORMONDE JAYNE
London Perfumery
ISFARKAND
SHAMPOOING

ORMONDE JAYNE
London Perfumery
ISFARKAND
CONDITIONER

ORMONDE JAYNE
London Perfumery
ISFARKAND
SKINCARE BAR
SAVON CORPS HYDRATANT





With incomparable views
of the royal park this is an
extraordinary place to relax and
entertain. Enjoy the prestige
and your privacy.



Because you are home.

THE ROYAL SUITE

Remaining true to the elegant Victorian architectural heritage but introducing a fresh, contemporary style, our 242 square metre Royal Suite evokes a feeling of staying in a chic city apartment. Enjoying magnificent views over Hyde Park, the décor gently reflects the tranquillity of the natural environment outside and delicately blends luxurious touches, such as ornate aubergine-coloured Maya Romanoff wallpaper, against stunning design pieces, such as the bespoke, double-tiered rock crystal chandelier in the dining room.

Providing ample room for entertaining, with a kitchen and a large dining room that seats up to 10 guests, the suite also enjoys original artwork provided by London's celebrated Halcyon Gallery, which guests have the opportunity to purchase. Fitted with a restored original fireplace, a private bar and reclaimed oak timber floor, the elegant living room provides access to a sweeping 70 metre balcony overlooking leafy Hyde Park, which is large enough to entertain up to 40 guests. Add to this the benefit of a private butler service, the Royal Suite at Mandarin Oriental Hyde Park, London truly is the epitome of an opulent home for the world's travelling elite.

AMENITIES AND ROOM FEATURES

- Butler service
- Complimentary internet and pay TV
- Personalised stationery
- Luxurious linens by Josephine Home
- Pillow menu
- Twice daily housekeeping service
- Complimentary open bar
- Large working desk
- Nespresso coffee machine

TECHNOLOGY

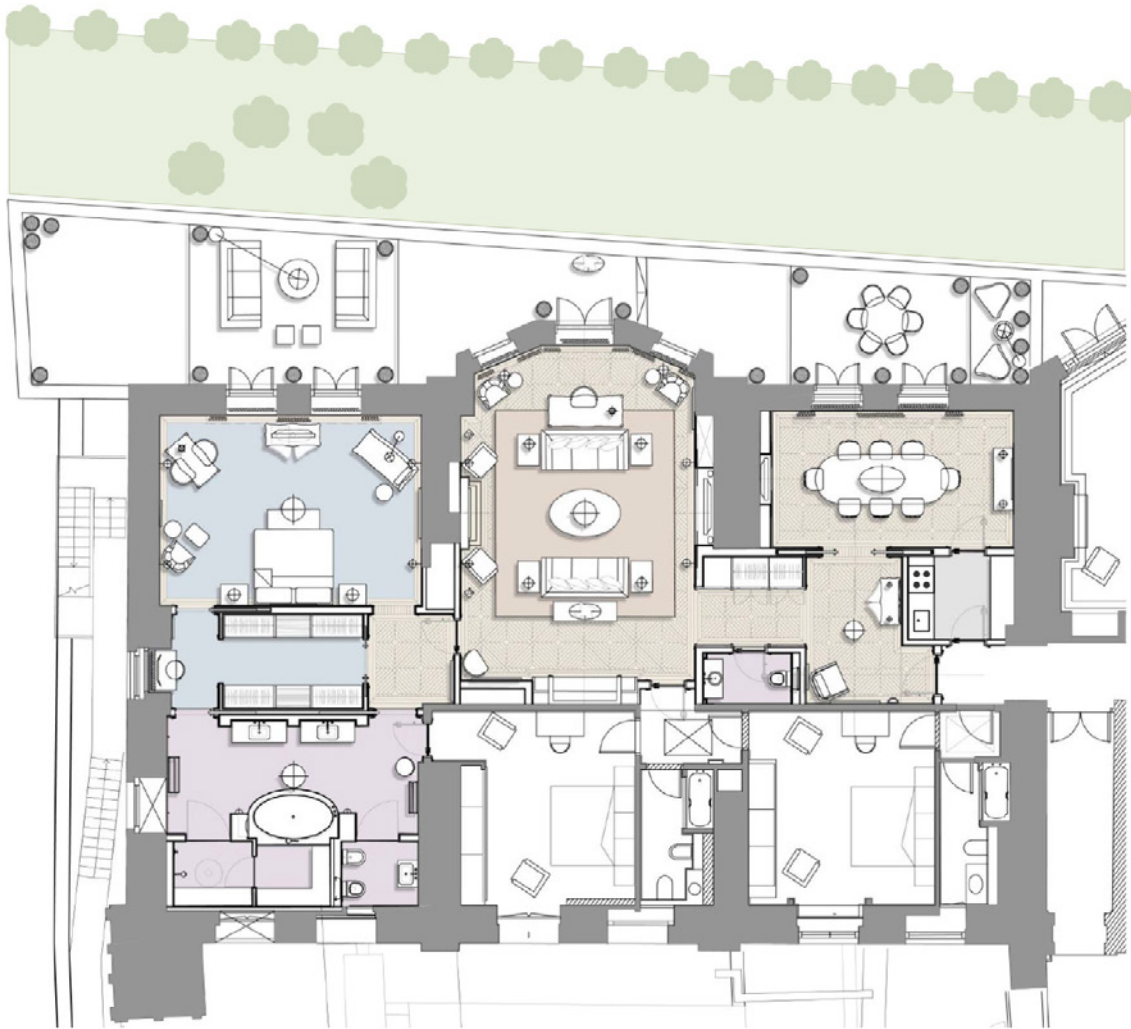
- Bang & Olufsen televisions with high definition digital content on demand
- Fast, high quality bandwidth Internet, both wired and wireless; with the option of registering up to four devices
- High quality audio system including integration of iPod or MP3

*Approximately 242 square metres / 2411 square feet
Park facing with 70 metre outdoor terrace*

BATHROOM

- Generous over-sized bath tub with TV
- Double walk-in shower with spacious steam bath
- Luxurious bathroom amenities by Ormonde Jayne
- Plush terry bathrobes
- Heated floors and towel rail

THE FLOOR PLAN



MANDARIN ORIENTAL HYDE PARK, LONDON

LOCATION

- A highly prestigious address in Knightsbridge
- Facing London's leading fashion stores and the green expanse of Hyde Park
- Knightsbridge underground station is on the corner with easy access to the City and West End

MEETING AND BUSINESS

- Six impressive spaces with period character
- Views of the park and filled with natural light
- Catering for up to 650 guests
- Fully equipped business centre

SPA

- Consistently voted one of the best spas in the world
- Exclusive range of signature spa therapies and tailor-made Time Rituals™
- A serene heat and water oasis
- Private consultations for guests' total wellness

RESTAURANTS AND BAR

- Superb views during breakfast over Hyde Park from our Dining Room
- Bar Boulud, London, seasonal French bistro
- Dinner by Heston Blumenthal, inspired by historical British cuisine
- Mandarin Bar, the chicest bar in fashionable Knightsbridge
- The Rosebery, the perfect backdrop for Afternoon Tea and Champagne Cocktails

LEISURE

- Comprehensive fitness and wellbeing facility with state-of-the-art Technogym® equipment and a 17 metre indoor swimming pool
- Adjacent to Hyde Park and 350 acres of green space
- Prime view of Household Cavalry's daily procession
- London's leading fashion stores, Harvey Nichols and Harrods, are across the road
- Excellent location for London's most famous theatres and museums

Hotel Address:

66 Knightsbridge, London SW1X 7LA, UK
Telephone +44 (0)20 7235 2000

molon-reservations@mohg.com
mandarinoriental.com/london
molon-info@mohg.com



