

Snoopy Museum Tokyo – All ages



The Charles M.Schulz Museum & Research Center and Sony Creative Products Inc. will be opening the first museum outside of the US in Roppongi dedicated to celebrate the art of Charles M.Schulz and his wonderful creations. It will also house a themed café and a speciality shop with exclusive items. Getting there: 20 minutes by taxi from the hotel.

45 minutes from the hotel...

Ghibli Museum – 5 years and above

This is an animation and art museum of Hayao Miyazaki's Studio Ghibli, one of Japan's most famous animation studios located in Inokashira Park in Mitaka, just outside of central Tokyo. This museum is a must-see for fans of the films such as My Neighbor Totoro, Princess Mononoke, and Spirited Away. The museum itself is playfully designed in the distinct style of the studio's films, and many of their famous characters are displayed. The first floor of the museum exhibits the history and techniques of animation as well as a small theatre which shows short films by Ghibli that are exclusive to the museum. The second floor has special temporary exhibitions. The museum also has a cafe, children's play area, a rooftop garden and a gift shop. Please bare in mind that this seems to be primarily a Japanese tourist attraction, although the brochure contains a variety of languages, the signs within the museum are written in Japanese only. Admission to the Ghibli Museum is strictly by advance purchase of a reserved ticket specifying the appointed date of the reservation.

Getting there: 25 minutes by JR Chuo Line from Kanda station to Mitaka station. 15-minute walk from Mitaka station.

Tokyo Sea Life Park – All ages

In this glass-dome aquarium, 1,250 species of 75,000 marine creatures including the world famous migratory bluefin tuna swim around in 2,200 tons of water.

Getting there: 40 minutes by JR Sobu Line from Shin-nihonbashi station to Tokyo station and transfer to JR Keiyo line to Kasai Rinkai Koen station.

75 minutes from the hotel ...

Sanrio Puroland – 3 to 7 years



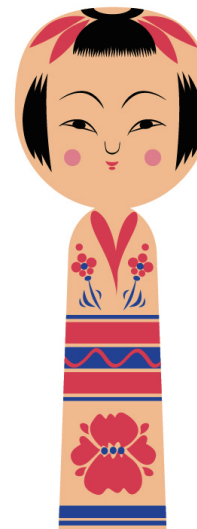
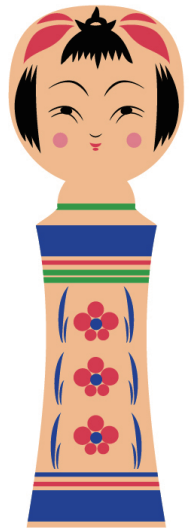
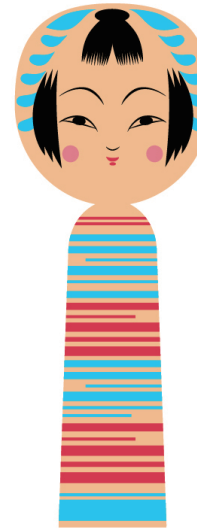
Sanrio Puroland is an indoor theme park and offers a variety of live performances, and attractions, including full-scale musicals and audience participation shows. They are performed by characters such as Hello Kitty, My Melody and other popular characters. "Kitty's House" where visitors can peep at Kitty's room including the living room and the bathroom is also popular.

Getting there: Approximately 60 minutes to Tama-centre station by train from Tokyo station, Transfer to Keio Line at Shinjuku station.



- Great spots even on a rainy day

Children's Activity Guide



mandarinoriental.com/tokyo

© 2016 Mandarin Oriental, Tokyo

MANDARIN ORIENTAL, TOKYO マンダリン オリエンタル 東京

〒103-8328 東京都中央区日本橋室町2-1-1 2-1-1, Nihonbashi Muromachi, Chuo-ku, Tokyo 103-8328, Japan Telephone +81 3 3270 8800 Facsimile +81 3 3270 8828

Here are suggestions to take your kids around Tokyo.
Please do not hesitate to ask our Concierge for maps and additional information.

15 minutes from the hotel...

Ueno Zoological Gardens – All ages

Ueno Zoo is the oldest Zoo in Japan and exhibits 500 species of animals including the giant Panda!
Getting there: 7 minutes by Tokyo Metro Ginza Line from Mitsukoshimae station to Ueno station. 5-10 minutes walk from Ueno station.

Science Museum – 7 years and above

Opened in 1964, the Science Museum has many interactive exhibits, including features on computers and communications, raw materials and energy, light, space, engines and motors and electricity. The exhibits are displayed between the second and fifth floors. Begin with the technology of bicycles on the second floor, the third floor is dedicated to electricity, motors and motor vehicles. On the fourth floor there are galleries on space, the universe, iron, building materials and the future, and the fifth floor has exhibits on life sciences, the body, optics, computers DNA and the human genome. Many of the hands-on, interactive displays have been provided and sponsored by Japanese companies involved in the various fields.
Getting there: 7 minutes by Tokyo Metro Hanzomon Line from Mitsukoshimae station to Kudanshita station. 7-minute walk from Kudanshita station.

Tokyo Dome City – All ages

Tokyo Dome City is a leisure complex consisting of the Tokyo Dome baseball stadium, an amusement park, a variety of shops and restaurants. You can enjoy various rides, entertainment facilities including a large indoor playground for children called “AsoBono” where children from 6 months and up can play with various kinds of toys. Inside the park there are also a roller skate arena, bowling centre, baseball game and more.
Getting there: 15 minutes by taxi from the hotel.

Hakuhinkan Toy Park (Shop)

Hakuhinkan Toy Park was listed in the Guinness Book of World Records in 1986 as the largest specialty toy store in Japan. The store carries approximately 100,000 toys, stuffed animals, games, dolls, variety goods, and other items, promising to delight a playful heart and entertain both children and adults all day long.
Getting there: 10 minutes by taxi from the hotel.

Hibiya Park (Outdoor playground)

The park originally belonged to a feudal lord until the fall of the shogunate. Later it became a military parade ground before being designed as an urban park with playgrounds, music halls in a beautiful garden.
Getting there: 7 minutes by taxi from the hotel and close to the Imperial Palace and Ginza.

Tokyo Tower – All ages

Enjoy a 360 degree view of Tokyo from the 150 metre-high observation deck or the 250 metre-high special observatory. After the observatory, enjoy a shopping arcade and an aquarium.
Getting there: 5 minutes by Tokyo Metro Ginza Line from Mitsukoshimae station to Ginza station and transfer to the Hibiya Line to Kamiya-cho station. 7-minute walk from the Kamiya-cho station.

Tokyo Toy Museum – 3 to 10 years

The Tokyo Toy Museum was opened in 2008 making the use of the elementary school building which was constructed before World War II. The theme of this museum is “encountering toys that open the heart.” Over 10,000 toys are available for both children and adults, and visitors can touch soothing Japanese wooden toys and European toys with refined designs. A toy workshop to make toys with recycled materials is open every day, and volunteer “toy curator” staff members and toy consultants teach visitors how to play with the toys.
Getting there: 15 minutes by taxi from the hotel.

30 minutes from the hotel...

National Museum of Emerging Science and Innovation (Miraikan) – 5 years and above

A modern, interactive and child-friendly museum in Odaiba showcasing the best of Japan’s famed innovations in technology, past and present, through cleverly curated special exhibitions. Its permanent collection is also a must visit for robot or space travel enthusiasts. You can see ASIMO robot performance.
Getting there: Approximately 30 minutes by Tokyo Metro Ginza line from Mitsukoshimae station to Shimbashi station and transfer to Yurikamome line to Funeno-Kagakukan station. 5-minute walk from Funeno-Kagakukan station.

Joypolis – 7 years and above

This is an indoor theme park with Sega’s virtual-reality attractions. Bilingual instructions are provided for each game. Ideal for children 7 to 12 years old.
Getting there: Approximately 30 minutes by Tokyo Metro Ginza line to Shimbashi station and transfer to Yurikamome line to Daiba station. 5-minute walk from Daiba station.

Tokyo SkyTree® – All ages

This is Tokyo’s new distinctive feature on its dynamic city skyline. The Tokyo SkyTree® at 634 metres is the world’s tallest broadcasting tower. There is also the “Tokyo Soramachi”, a large shopping, dining and entertainment complex, located adjacent to the Tokyo SkyTree®.
Getting there: 12 minutes by Tokyo Metro Hanzomon Line from Mitsukoshimae station to Oshiage station.

Pokemon Centre (Shop) – 5 to 12 years

Reopened in 2007, the Pokemon Centre is bigger than before and contains every Pokemon-related goods (movies, video games, card games, clothing, and even snacks). There is a room where children whose birthdays are near can go in and enjoy a Pokemon battle on a large video screen.
Getting there: 30 minutes by Tokyo Metro Hanzomon Line from Mitsukoshimae station to Otemachi station and transfer to Marunouchi line to Ikebukuro station.

KIDDY LAND (Shop)

KIDDY LAND Harajuku Store, a popular toy store featuring various characters loved by everyone from children to adults, the store is virtually a theme park of character goods. The biggest attraction of the revamped store is specialty shops and sections dedicated to different characters. There are four specialty shops including Snoopy town shop and Hello Kitty shop. Not only do these shops sell cute products, they also offer figures and plastic models that adults can enjoy as a collection hobby.
Getting there: 20 minutes by taxi from the hotel.