



MANDARIN ORIENTAL, MUNICH  
MEETING, CONFERENCE AND BANQUETING

meeting



Neuturmstraße 1, 80331 Munich, Germany, Tel. +49(0)89 290 980, Fax +49(0)89 222 539,  
momuc-reservations@mohg.com, www.mandarinoriental.com

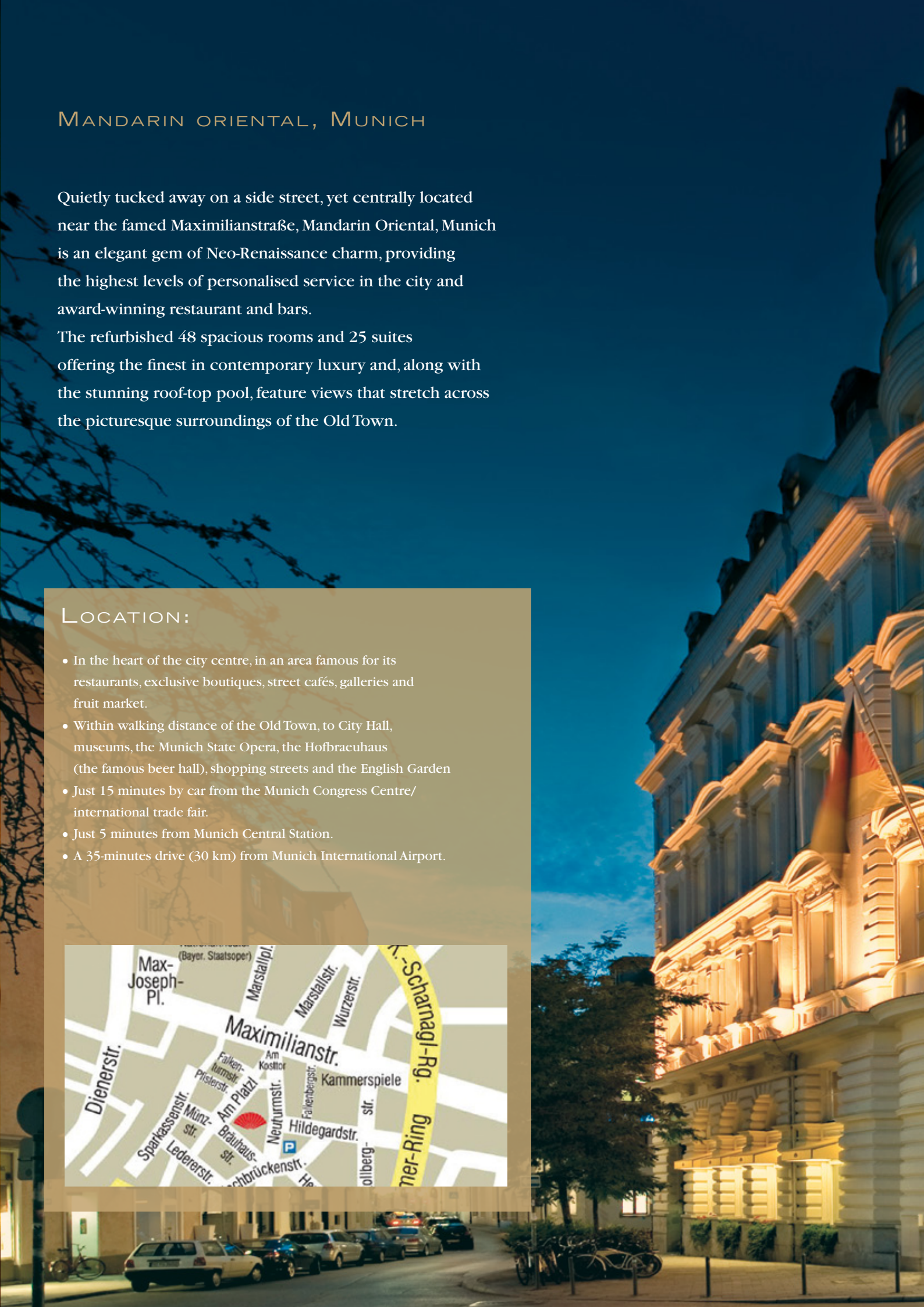
## MANDARIN ORIENTAL, MUNICH

Quietly tucked away on a side street, yet centrally located near the famed Maximilianstraße, Mandarin Oriental, Munich is an elegant gem of Neo-Renaissance charm, providing the highest levels of personalised service in the city and award-winning restaurant and bars.

The refurbished 48 spacious rooms and 25 suites offering the finest in contemporary luxury and, along with the stunning roof-top pool, feature views that stretch across the picturesque surroundings of the Old Town.

### LOCATION:

- In the heart of the city centre, in an area famous for its restaurants, exclusive boutiques, street cafés, galleries and fruit market.
- Within walking distance of the Old Town, to City Hall, museums, the Munich State Opera, the Hofbräuhaus (the famous beer hall), shopping streets and the English Garden
- Just 15 minutes by car from the Munich Congress Centre/ international trade fair.
- Just 5 minutes from Munich Central Station.
- A 35-minutes drive (30 km) from Munich International Airport.





GUESTROOMS:

- A total of 48 state-of-the-art guestrooms dominating by tones of cream, gold and brown, radiating a sense of exclusive comfort and Biedermeier style. The upholstered furniture is in cream and gold hues, while the quadratic inlaid oak-panelled parquet flooring harmoniously rounds off the overall impression.
- All rooms offer high-speed Internet access, a Bang & Olufsen sound system, a flat- screen TV with integrated DVD player and a Bose iPod docking station.
- The spacious marble bathrooms offer a separate bathtub and shower, exclusive bath products, heated floors and mirrors, and a flat-screen TV offer a relaxing atmosphere.



JUNIOR SUITES & SUITES:



- All 25 suites offer a comfortable living room area, a walk-in closet and a working space.
- The highlights are the Grand Presidential Suite (325 sq m), the Presidential Suite (120 sq m) and our Oriental Suite (70 sq m) where the use of glass, mirrors and chrome with additional decorative elements, such as the impressively resplendent crystal lamps, creates a modern mix of high-quality materials.
- The Presidential Suite and the Oriental Suite both offer a winter garden and allow a great view over the landmarks of Munich.
- Additional comfort is provided in the Presidential Suite by the newly installed state-of-the art kitchen.
- The exclusive bathroom of the Presidential Suite is equipped with a steam bath and a whirlpool.

FACTS ABOUT THE FIVE-STAR SUPERIOR HOTEL:

- High-speed Internet/wireless LAN access in all rooms and meeting rooms.
- Large working desk and electronic safe in all rooms.
- Individually controlled air-conditioning in all rooms and meeting spaces.
- Yoga mats in all guestrooms.
- Free mini bar and daily fresh fruit.
- Nespresso coffee machine in the Corner Suite, the Tower Suites and the Presidential Suite.
- 24-hours Room Service.
- Daily international newspapers.
- Conference facilities for up to 120 people with modern Conference technology.
- Fully equipped business centre with high-speed Internet access and fax service.
- Gourmet Restaurant Mark's.
- Limousine service for airport transfers and valet parking.
- Complimentary Mercedes Benz bikes.
- Modern, fully equipped fitness room.
- Roof terrace with a heated swimming pool and a spectacular 360° view overlooking the picturesque city and the Alps.

RESTAURANTS AND BARS:

RESTAURANT MARK'S:

Restaurant Mark's, the hotel's signature venue, offers fine dining and is listed as one of the top five gourmet restaurants in the city. The cuisine is Mediterranean with an Asian influence, served with exclusive wines by personal, professional staff.

Located on the first floor, Restaurant Mark's is open daily from 7 to 10:30 p.m.



BISTROMO:

Experience casual cuisine at the new BistroMO integrated into the lobby area, making it the perfect place for business lunches and dinners.

BistroMO is open daily from noon to 2 p.m. and from 6 to 10:30 p.m.



MANDARIN BAR:

A familiar landmark in Munich for business people, and the place where shoppers refresh and travellers meet up, the Mandarin Bar offers evening cocktails, accompanied by live piano music.

The Mandarin Bar, located in the lobby area, is open daily from 8 to 1 a.m



RUM CLUB:

This is an intimate setting in which to experience the finest global collection of rums and cigars.

The Rum Club is located in the tower area of the lobby and is open daily from 8 to 1 a.m.



LE CAFÉ:

This relaxed French Café on a leafy side street off Neuturmstrasse is open for meals from petit déjeuner to light dinners.

The Café is open daily during the summer time from 9 a.m. to 9 p.m.



CHINA MOON ROOF TERRACE:

The China Moon Roof Terrace on the 8th floor offers a spectacular 360° view overlooking the city of Munich. The ambience in the open-air restaurant and lounge is highlighted by Asian culinary specialties or summer cocktails.

The China Moon Roof Terrace is open daily from May to October from noon to 10 p.m.



FITNESS:

In the well-equipped and modern fitness room personal trainers are available for hire, while the heated pool on the rooftop (open May to October) offers a fabulous view of the city of Munich. The newly designed fitness area is open from November 2011.

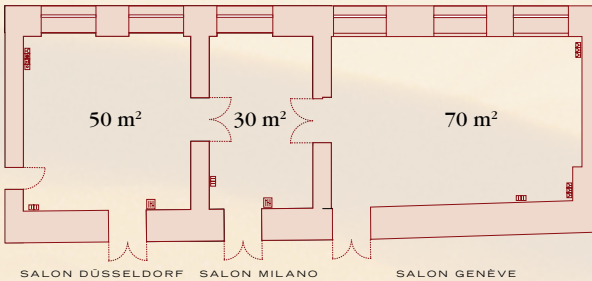
CONFERENCE FACILITIES:

All three private salons offer natural daylight and cherry wood paneling, and are the ideal location for meetings for up to 150 people. The meeting rooms are equipped with modern conference technology, high-speed Internet access (wireless LAN), a Bose audio system and individually controlled air-conditioning. All meeting rooms can be booked individually or connected by large doors.

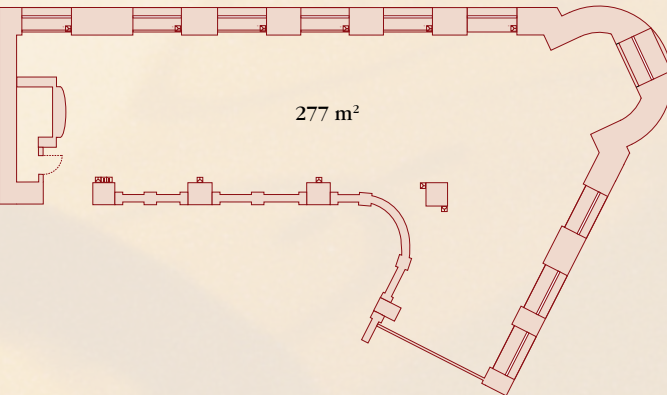
Individual matching to the meeting space is the gourmet kitchen in an appropriate setting.



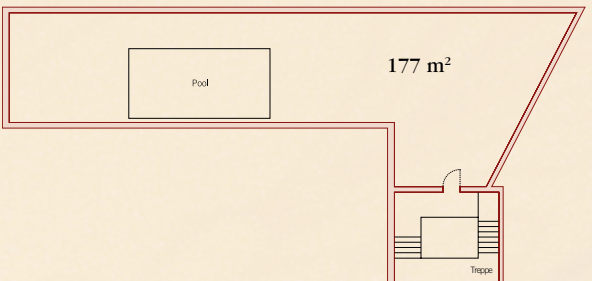
SALONS:



RESTAURANT MARK'S:



CHINA MOON ROOF TERRACE



		Empfang Reception	U-Tafel U-Shape	Recktafel Boardroom style	Parlamentarisch/ Classroom style	Runde Tische Round Tables	Cabaret	Theater Theatre style
Salon Düsseldorf	50 m²/538 sq.ft	50	20	20	24	30	24	40
Salon Milano	30 m²/323 sq.ft	30	-	14	15	10	-	15
Salon Genève	70 m²/753 sq.ft	70	26	30	50	50	40	80
Restaurant Mark's	277m²/2981 sq.ft	200	-	40	-	120	-	120
Dachterrasse	177 m²/1905 sq.ft	120	-	20	-	-	-	-